

Hours Lost Due to Work Related Injury/Illness Youth Detention Services



KPI Owner: AD's and EA

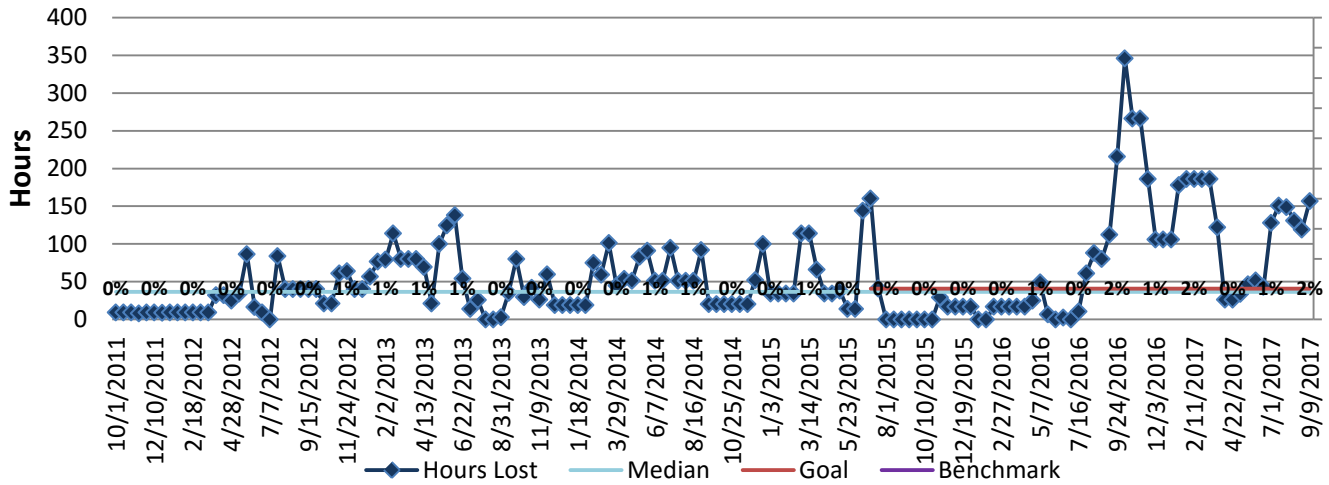
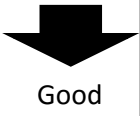
Process: Time and Attendance

Baseline, Goal, & Benchmark	Source Summary	Continuous Improvement Summary
Baseline: FY16 172.26 hours Goal: Reduce by 20% of previous fiscal year average. Benchmark: TBD	Data Source: Payable Time PeopleSoft Goal Source: Scope Summary Benchmark Source: TBD	Plan-Do-Check-Act Step 5: Pilot short term and/or long term solutions Measurement Method: The total number of hours per month employees were absent due to a work place injury or an illness contracted at work, rate calculated by dividing by total standard hours Why Measure: Minimize number & severity of workplace injuries/illness Next Improvement Step: Create focus group and reevaluate training and alternative methods to prevent injuries.

How Are We Doing?

09.11.16-09.09.17 12 Month Goal	09.11.16-09.09.17 12 Month Actual		08.27.17-09.09.17 Goal	08.27.17-09.09.17 Actual	
1,056	3,703	🚦	41	157	🚦
Hours	Hours		Hours	Hours	

Hours Lost Due to Work Related Injury/Illness



09.11.16-09.09.17 Pareto Analysis

