

# Hours Lost Due to Work Related Injury/Illness Youth Detention Services



KPI Owner: Assistant Director

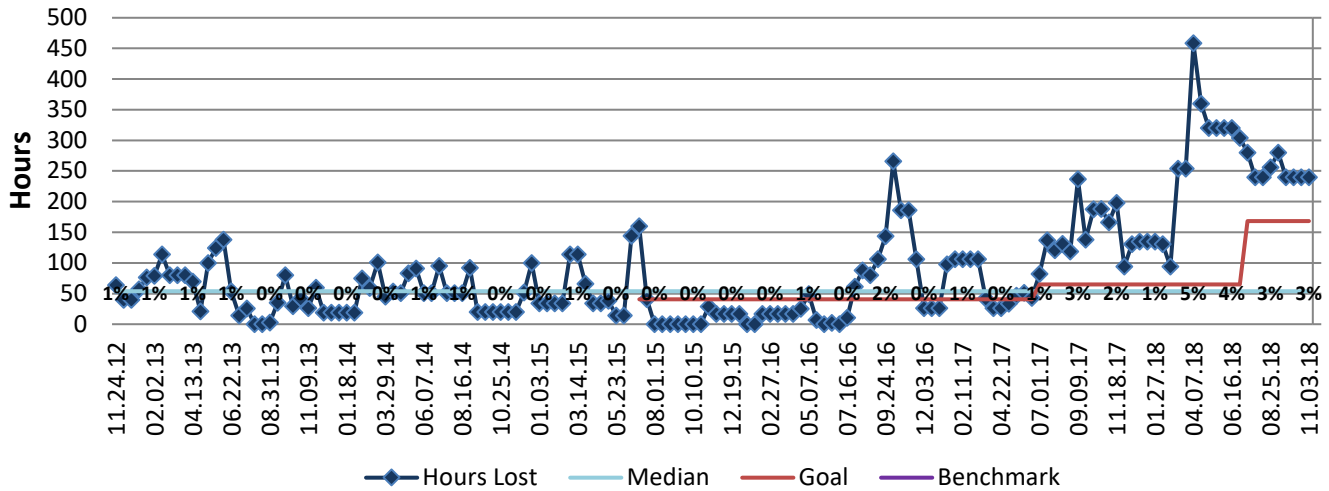
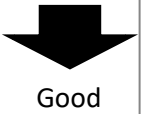
Process: Time and Attendance

Baseline, Goal, & Benchmark	Source Summary	Continuous Improvement Summary
Baseline: 5468.16 Hours Goal: Reduce by 20% of previous fiscal year average  Benchmark: TBD	Data Source: Payable Time PeopleSoft  Goal Source: Scope Summary  Benchmark Source: TBD	Plan-Do-Check-Act Step 5: Pilot short term and/or long term solutions Measurement Method: The total number of hours per month employees were absent due to a work place injury or an illness contracted at work, rate calculated by dividing by total standard hours Why Measure: Minimize number & severity of workplace injuries/illness Next Improvement Step: Engage YDS" wellness goals in strategic plan and begin safety team

### How Are We Doing?

11.05.17-11.03.18 12 Month Goal	11.05.17-11.03.18 12 Month Actual		10.21.18-11.03.18 Goal	10.21.18-11.03.18 Actual	
<b>2,614</b>	<b>6,219</b>	🚦	<b>168</b>	<b>240</b>	🚦
Hours	Hours		Hours	Hours	

## Hours Lost Due to Work Related Injury/Illness



### 11.05.17-11.03.18 Pareto Analysis

