

# Hours Lost Due to Work Related Injury/Illness Youth Detention Services



KPI Owner: AD's and EA

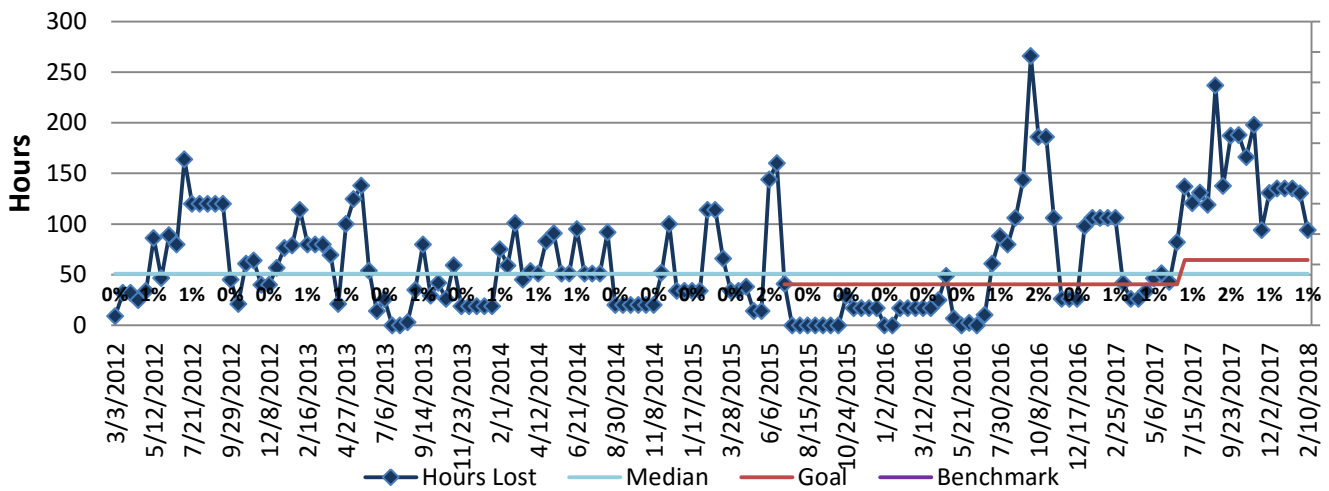
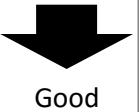
Process: Time and Attendance

Baseline, Goal, & Benchmark	Source Summary	Continuous Improvement Summary
Baseline: 2101.9 Hours Goal: Reduce by 20% of previous fiscal year average.  Benchmark: TBD	Data Source: Payable Time PeopleSoft  Goal Source: Scope Summary  Benchmark Source: TBD	Plan-Do-Check-Act Step 5: Pilot short term and/or long term solutions  Measurement Method: The total number of hours per month employees were absent due to a work place injury or an illness contracted at work, rate calculated by dividing by total standard hours  Why Measure: Minimize number & severity of workplace injuries/illness  Next Improvement Step: Create focus group and reevaluate training and alternative methods to prevent injuries.

### How Are We Doing?

02.12.17-02.10.18 12 Month Goal	02.12.17-02.10.18 12 Month Actual		01.28.18-02.10.18 Goal	01.28.18-02.10.18 Actual	
<b>1,465</b>	<b>2,932</b>	🚦	<b>65</b>	<b>94</b>	🚦
Hours	Hours		Hours	Hours	

## Hours Lost Due to Work Related Injury/Illness



### 02.12.17-02.10.18 Pareto Analysis

