

Community Air Quality - PM_{2.5} (Fine Particulate Matter)

SustainStat



KPI Owner: Community KPI

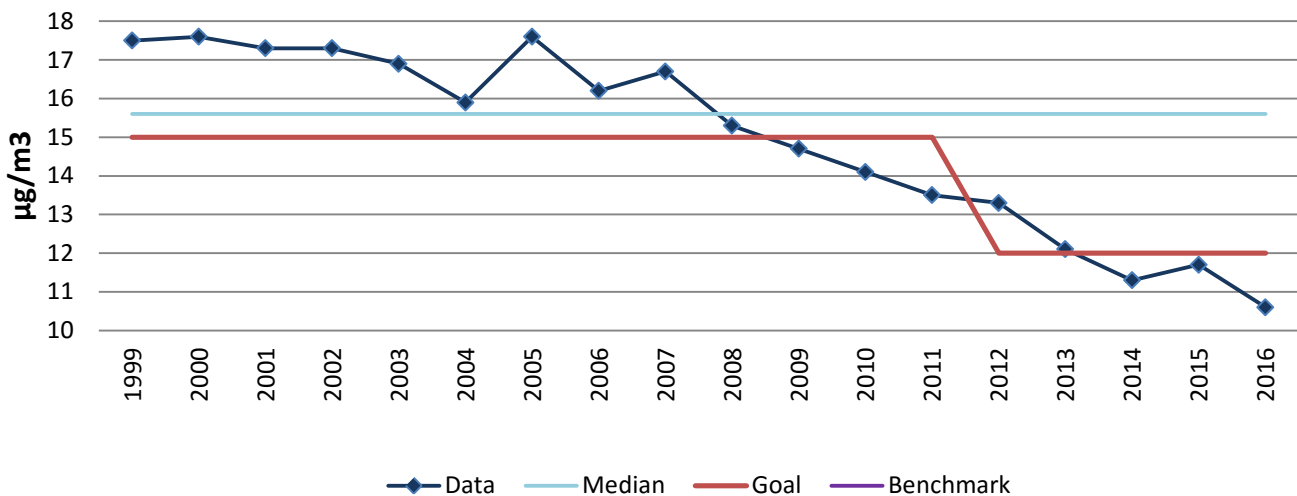
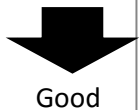
Process: Air Monitoring

Baseline, Goal, & Benchmark	Source Summary	Continuous Improvement Summary
Baseline: 12.1 µg/m ³ in 2013 Goal: To meet or achieve 12 µg/m ³ Benchmark: TBD	Data Source: APCD Air Monitoring Section Goal Source: National Ambient Air Quality Standards Benchmark Source: TBD	Plan-Do-Check-Act Step 8: Monitor and diagnose Measurement Method: Rolling 3-yr avg of PM _{2.5} for the Louisville MSA Why Measure: Required EPA metric defined in the Clean Air Act national standards to provide protection for public health and the environment. Next Improvement Step: Continue to implement and enforce national, state, and local regulatory standards. Support community efforts to reduce pollution from additional sources, including mobile and area sources not otherwise regulated by local or state air quality standards.

How Are We Doing?

2012-2016 5 Year Goal	2012-2016 5 Year Actual		2016 Goal	2016 Actual	
12.0	11.8		12.0	10.6	
µg/m ³	µg/m ³		µg/m ³	µg/m ³	

Community Air Quality - PM_{2.5} (Fine Particulate Matter)



Root cause analysis is not necessary because there is no gap between the goal and current performance.