

Hours Lost Due to Work Related Injury/Illness Metro Parks



KPI Owner: Maurice Brown

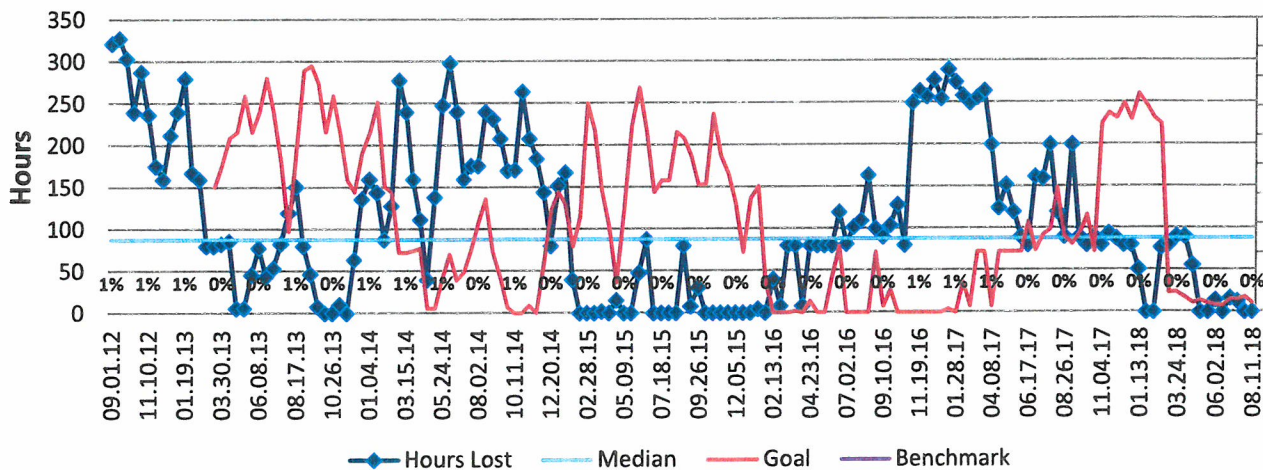
Process: Safety Management

Baseline, Goal, & Benchmark	Source Summary	Continuous Improvement Summary
Baseline: CY17= 3020 Total Hours Lost Goal: Reduce Hours Lost Due to Work Related Illness and Injury by 10% compared to same time previous year. Benchmark: TBD	Data Source: Payable Time PeopleSoft Goal Source: Scope Summary Benchmark Source: TBD	Plan-Do-Check-Act Step 2: Validate problem: baseline, benchmark, & goal Measurement Method: The total number of hours per month employees were absent due to a work place injury or an illness contracted at work, rate calculated by dividing by total standard hours. Why Measure: Minimize number & severity of workplace injuries/illness. Next Improvement Step: Increase training for driving safety, especially for Passenger vans.

How Are We Doing?

08.13.17-08.11.18 Goal	08.13.17-08.11.18 Actual		07.29.18-08.11.18 Goal	07.29.18-08.11.18 Actual	
2,764	1,458		11	0	
Hours	Hours		Hours	Hours	

Hours Lost Due to Work Related Injury/Illness



Root cause analysis is not necessary because there is no gap between the goal and current performance.