

Hours Lost Due to Work Related Injury/Illness Metro Parks



KPI Owner: Nancy Ray

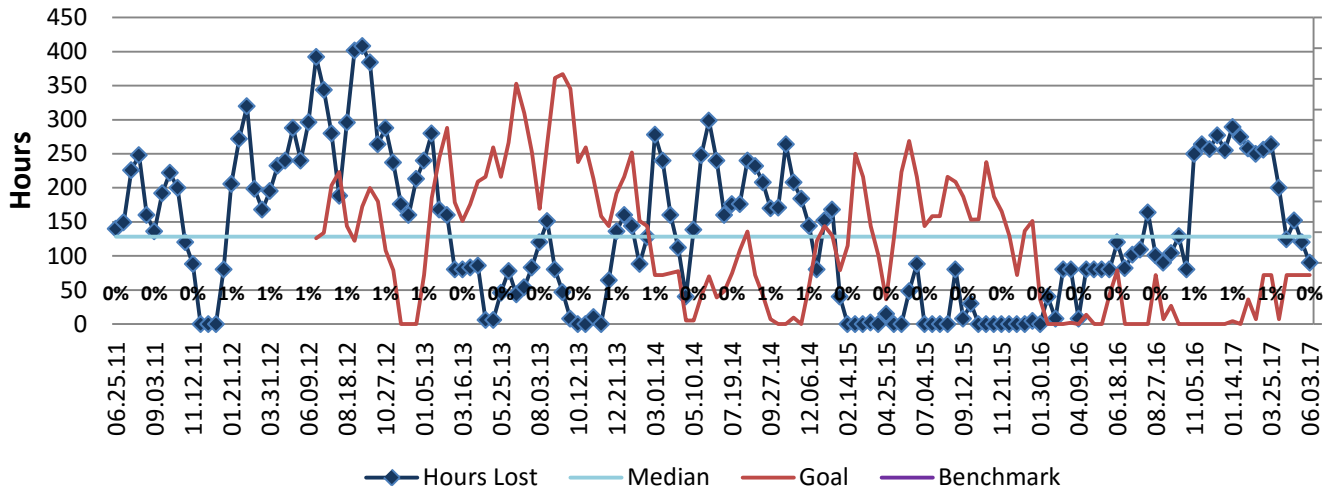
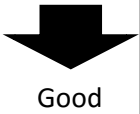
Process: Safety Management

Baseline, Goal, & Benchmark	Source Summary	Continuous Improvement Summary
Baseline: CY15 = 631 Total Hours Lost Goal: Reduce Hours Lost Due to Work Related Illness and Injury by 10% compared to same time previous year Benchmark: TBD	Data Source: Payable Time PeopleSoft Goal Source: Scope Summary Benchmark Source: TBD	Plan-Do-Check-Act Step 2: Validate problem: baseline, benchmark, & goal Measurement Method: The total number of hours per month employees were absent due to a work place injury or an illness contracted at work, rate calculated by dividing by total standard hours Why Measure: Minimize number & severity of workplace injuries/illness Next Improvement Step: Evaluate 30 Days to Success Focus Safety Program implemented in Mach 2016

How Are We Doing?

06.05.16-06.03.17 12 Month Goal	06.05.16-06.03.17 12 Month Actual		05.21.17-06.03.17 Goal	05.21.17-06.03.17 Actual	
672	4,663	⬇	72	90	⬆
Hours	Hours		Hours	Hours	

Hours Lost Due to Work Related Injury/Illness



The seven basic quality tools, "5 Whys" technique, brainstorming and other methods will be applied to the measure graphed above. The purpose of using the tools/methods is to understand what makes performance less than desirable if performance is not best in class.