

Hours Not Worked Metro Parks



KPI Owner: Nancy Ray

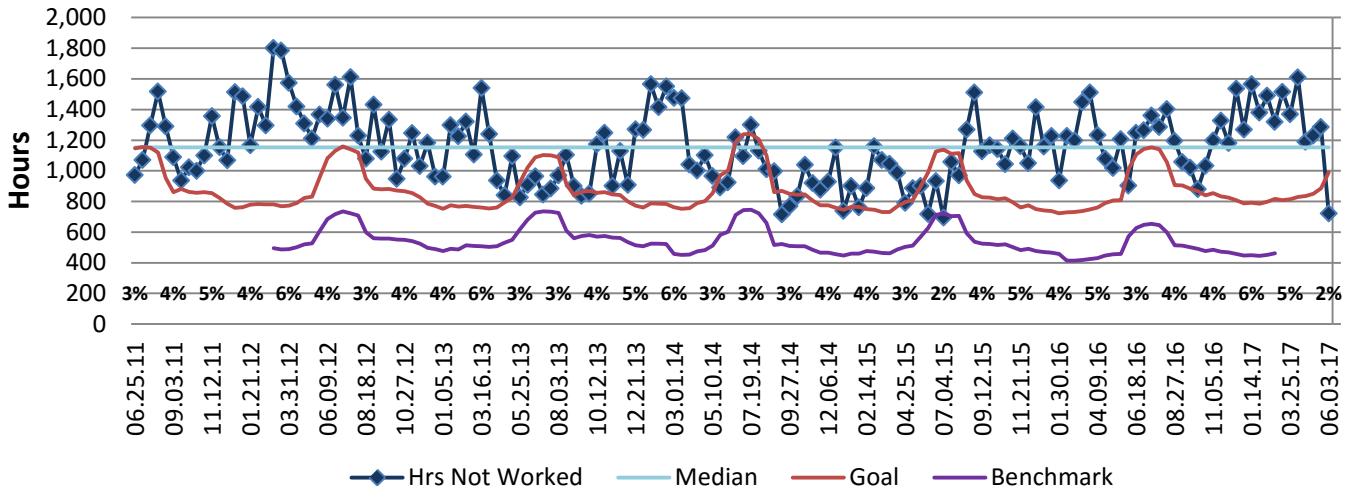
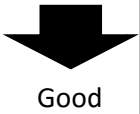
Process: Safety Management

Baseline, Goal, & Benchmark	Source Summary	Continuous Improvement Summary
Baseline: CY15 = 26,984 Goal: No more than 3% of Hours Not Worked in a month (#Total Opportunity Hours * .03) Benchmark: Local Government Rate of 1.7%	Data Source: Payable Time PeopleSoft Goal Source: Scope Summary Benchmark Source: Bureau Labor Statistics	Plan-Do-Check-Act Step 4: Generate and prioritize potential solutions Measurement Method: Total # of hrs per month employees were not at work performing normal job functions (excludes vacations & holidays), rate calculated by dividing by total standard hours Why Measure: Better understand culture impact on employee attendance Next Improvement Step: Parks has initiated a safety committee and completed a job hazard analysis in order to get to root causes of HNW

How Are We Doing?

06.05.16-06.03.17 12 Month Goal	06.05.16-06.03.17 12 Month Actual		05.21.17-06.03.17 Goal	05.21.17-06.03.17 Actual	
23,314	32,935		990	722	
Hours	Hours		Hours	Hours	

Hours Not Worked



06.05.16-06.03.17 Pareto Analysis

