

Hours Lost Due to Work Related Injury/Illness Public Works & Assets



KPI Owner: Vanessa Burns/Chris Scamahorne

Process: Accidents/Injuries

Baseline, Goal, & Benchmark	Source Summary	Continuous Improvement Summary
Baseline: 9% FY12 monthly avg rate Goal: Maintain the number of hours lost due to work related injuries/illnesses to 1% or less of the standard number of hours. Benchmark: TBD	Data Source: Payable Time PeopleSoft Goal Source: Scope Summary Benchmark Source: TBD	Plan-Do-Check-Act Step 8: Monitor and diagnose Measurement Method: The total number of hours per month employees were absent due to a work place injury or an illness contracted at work, rate calculated by dividing by total standard hours Why Measure: Minimize number & severity of workplace injuries/illness Next Improvement Step: Validated effectiveness of Sick Leave Report. Continue to track and monitor.

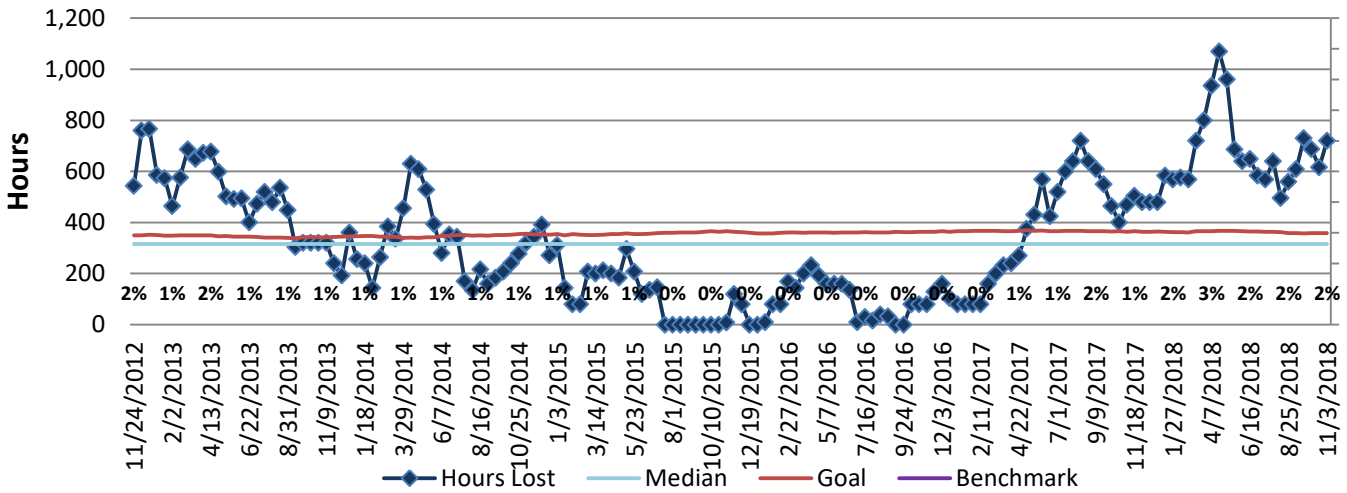
How Are We Doing?

11.05.17-11.03.18 12 Month Goal	11.05.17-11.03.18 12 Month Actual		10.21.18-11.03.18 Goal	10.21.18-11.03.18 Actual	
9,438	16,909		359	720	
Hours	Hours		Hours	Hours	

Hours Lost Due to Work Related Injury/Illness



Good



No Pareto Available

