

# Sidewalks on Backlog Reported Before 2013 Rated 4 or 5 Public Works & Assets: Engineering Services



KPI Owner: Jeff Brown

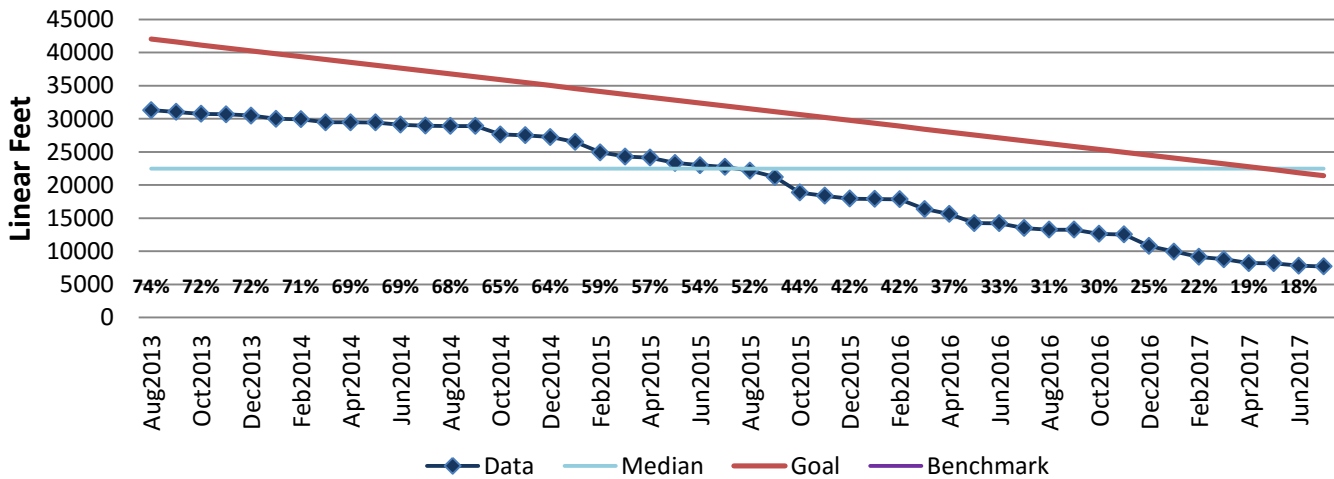
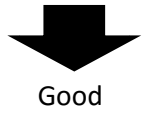
Process: Sidewalk Infrastructure Maintenance

Baseline, Goal, & Benchmark	Source Summary	Continuous Improvement Summary
<p>Baseline: 33,929 LF for Jan 2013</p> <p>Goal: By the end of FY19, ensure all Metro sidewalks reported through MetroCall prior to 1.1.13 and inspected, have a maximum Louisville Metro rating of 3 by rehabbing those sidewalks that have a rating of 4 or 5.</p> <p>Benchmark: TBD</p>	<p>Data Source: PW Sidewalk Master Log</p> <p>Goal Source: Mayors Strategic Goal 1</p> <p>Benchmark Source: TBD</p>	<p>Plan-Do-Check-Act Step 8: Monitor and diagnose</p> <p>Measurement Method: Linear feet of sidewalk reported before 2013 rated 4 or 5 that has not been funded or scheduled for repair.</p> <p>Why Measure: To ensure sidewalks are safe for pedestrian travel.</p> <p>Next Improvement Step: Continue to streamline sidewalk maintenance process.</p>

## How Are We Doing?

Aug2016-Jul2017 12 Month Goal	Aug2016-Jul2017 12 Month Actual		Jul2017 Goal	Jul2017 Actual	
<b>286,080</b>	<b>122,311</b>		<b>21,431</b>	<b>7,711</b>	
Linear Feet	Linear Feet		Linear Feet	Linear Feet	

## Sidewalks on Backlog Reported Before 2013 Rated 4 or 5



## Linear Feet of Sidewalk on Backlog Rated 4 or 5

