

Lost Time Injury Rate (cases with days away from work) Public Works & Assets



KPI Owner: Chris Scamahorne

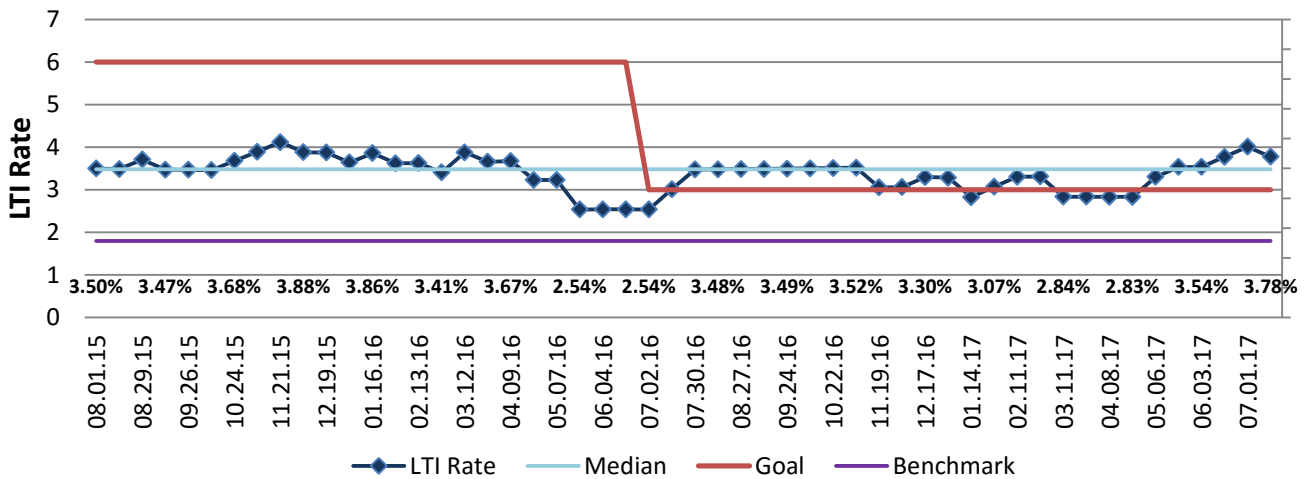
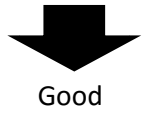
Process: Safety

Baseline, Goal, & Benchmark	Source Summary	Continuous Improvement Summary
Baseline: LTI rate of 7 in calendar year 2013 Goal: Reduce LTI rate from 7% in 2013 to 3% by the end of 2017. Benchmark: 1.8% all local gov Nov2013	Data Source: OSHA Logs & Payable Time Goal Source: Scope Summary Benchmark Source: Bureau Labor Statistics	Plan-Do-Check-Act Step 6: Validate that solutions work Measurement Method: In a 12 month period, # of OSHA recordables with lost work days times 200,000 divided by the total # of hours worked Why Measure: minimize number & severity of workplace injuries/illness Next Improvement Step: Looking to improve processes and ways to take safety to the next level.

How Are We Doing?

08.02.15-07.15.17 Rolling 52wk Avg Goal	08.02.15-07.15.17 Rolling 52wk Avg		07.17.16-07.15.17 Goal	07.17.16-07.15.17 Actual	
3.00	3.32	⬇	3.00	3.78	⬇
LTI Rate	LTI Rate		LTI Rate	LTI Rate	

Lost Time Injury Rate (cases with days away from work)



07.17.16-07.15.17 Pareto Analysis

