

# Hours Lost Due to Work Related Injury/Illness Public Works & Assets



KPI Owner: Vanessa Burns/Chris Scamahorne

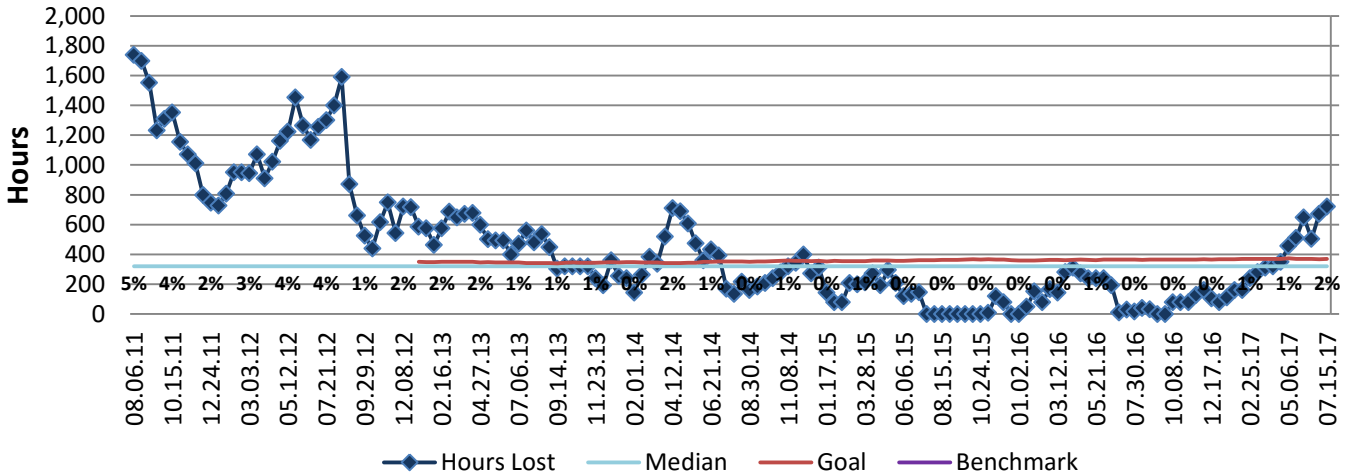
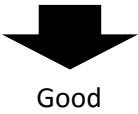
Process: Safety

Baseline, Goal, & Benchmark	Source Summary	Continuous Improvement Summary
Baseline: 3% FY12, 2% FY13 monthly avg rates Goal: Maintain the number of hours lost due to work related injuries/illnesses to 1% or less of the standard number of hours worked.  Benchmark: TBD	Data Source: Payable Time PeopleSoft  Goal Source: Scope Summary  Benchmark Source: TBD	Plan-Do-Check-Act Step 8: Monitor and diagnose Measurement Method: The total number of hours per month employees were absent due to a work place injury or an illness contracted at work, rate calculated by dividing by total standard hours Why Measure: Minimize number & severity of workplace injuries/illness Next Improvement Step: Continue to track and monitor to ensure that 1% is maintained.

### How Are We Doing?

07.17.16-07.15.17 12 Month Goal	07.17.16-07.15.17 12 Month Actual		07.02.17-07.15.17 Goal	07.02.17-07.15.17 Actual	
<b>9,569</b>	<b>6,244</b>		<b>370</b>	<b>720</b>	
<b>Hours</b>	<b>Hours</b>		<b>Hours</b>	<b>Hours</b>	

## Hours Lost Due to Work Related Injury/Illness



### 07.17.16-07.15.17 Pareto Analysis

