

Sidewalks on Backlog Reported Before 2013 Rated 4 or 5 Public Works & Assets: Engineering Services



KPI Owner: Jeff Brown

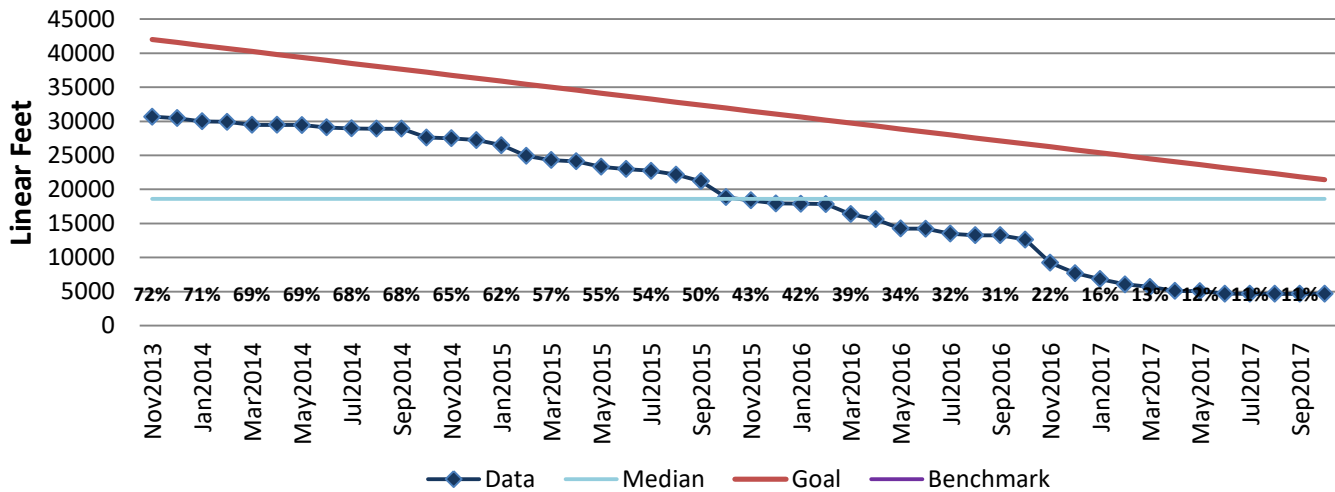
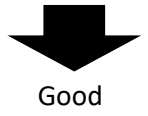
Process: Infrastructure Maintenance

Baseline, Goal, & Benchmark	Source Summary	Continuous Improvement Summary
<p>Baseline: 33,929 LF For Jan 2013</p> <p>Goal: By the end of FY19, ensure all Metro sidewalks reported through MetroCall prior to 1.1.13 and inspected, have a maximum Louisville Metro rating of 3 by rehabbing those sidewalks that have a rating of 4 or 5.</p> <p>Benchmark: TBD</p>	<p>Data Source: PW Sidewalk Master Log</p> <p>Goal Source: Mayor's Strategic Goal 1</p> <p>Benchmark Source: TBD</p>	<p>Plan-Do-Check-Act Step 8: Monitor and diagnose</p> <p>Measurement Method: Linear feet of sidewalk reported before 2013 rated 4 or 5 that has not been funded or scheduled for repair.</p> <p>Why Measure: To ensure sidewalks are safe for pedestrian travel.</p> <p>Next Improvement Step: Continue to streamline sidewalk maintenance process.</p>

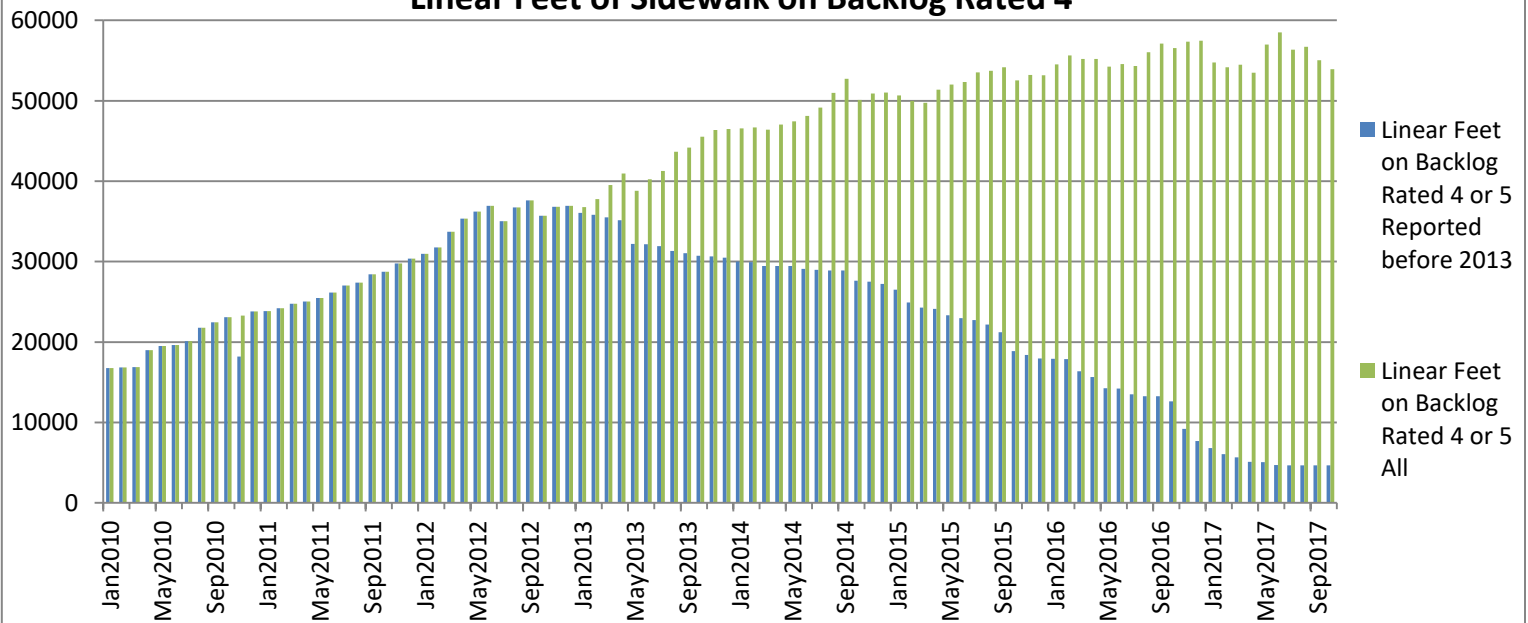
How Are We Doing?

Nov2016-Oct2017 12 Month Goal	Nov2016-Oct2017 12 Month Actual		Oct2017 Goal	Oct2017 Actual	
286,080	68,947		21,431	4,658	
Linear Feet	Linear Feet		Linear Feet	Linear Feet	

Sidewalks on Backlog Reported Before 2013 Rated 4 or 5



Linear Feet of Sidewalk on Backlog Rated 4



Monthly Measurement