

Hours Lost Due to Work Related Injury/Illness Public Works & Assets



KPI Owner: Vanessa Burns/Chris Scamahorne

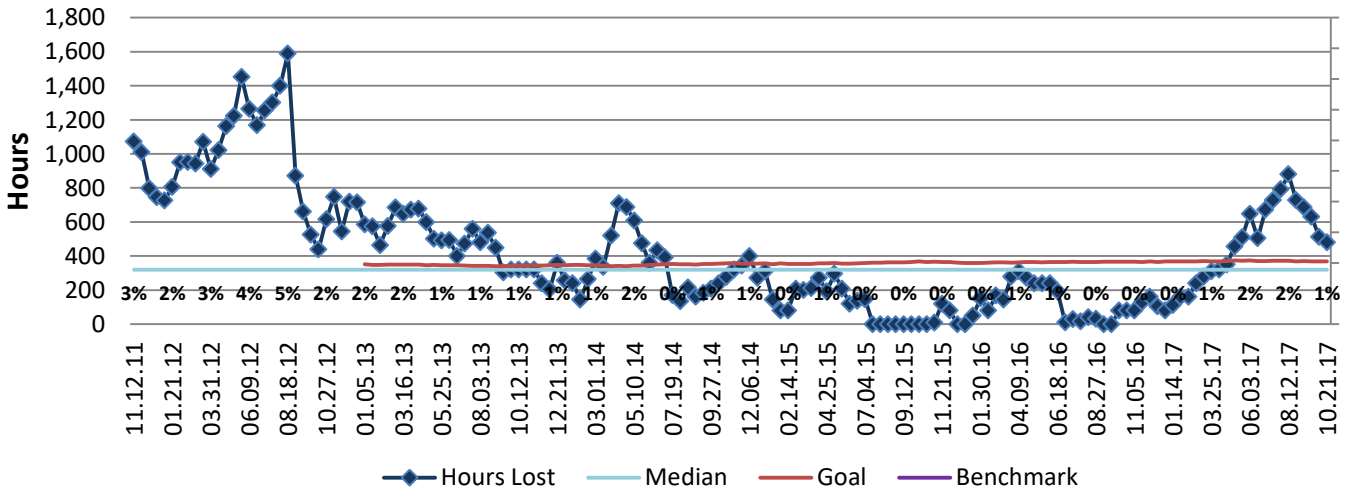
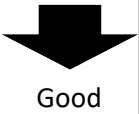
Process: Safety

Baseline, Goal, & Benchmark	Source Summary	Continuous Improvement Summary
Baseline: 3% FY12, 2% FY13 monthly avg rates Goal: Maintain the number of hours lost due to work related injuries/illnesses to 1% or less of the standard number of hours. Benchmark: TBD	Data Source: Payable Time PeopleSoft Goal Source: Scope Summary Benchmark Source: TBD	Plan-Do-Check-Act Step 8: Monitor and diagnose Measurement Method: The total number of hours per month employees were absent due to a work place injury or an illness contracted at work, rate calculated by dividing by total standard hours Why Measure: Minimize number & severity of workplace injuries/illness Next Improvement Step: Continue to track and monitor to ensure that 1% is maintained.

How Are We Doing?

10.23.16-10.21.17 12 Month Goal	10.23.16-10.21.17 12 Month Actual		10.08.17-10.21.17 Goal	10.08.17-10.21.17 Actual	
9,616	10,714	⬇	369	480	⬇
Hours	Hours		Hours	Hours	

Hours Lost Due to Work Related Injury/Illness



10.23.16-10.21.17 Pareto Analysis

