

Heavy Equipment Repair Log

Public Works & Assets: SWMS



KPI Owner: Keith Hackett

Process: Overtime Management/Operational Efficiency

Baseline, Goal, & Benchmark	Source Summary	Continuous Improvement Summary
Baseline: 42 heavy equipment for Apr 2015 Goal: Reduce the number of heavy equipment out for repair or preventative maintenance at any given time by 25%. Benchmark: TBD	Data Source: SWMS Sharepoint Site Goal Source: Executive Decision (AD Hackett) Benchmark Source: TBD	Plan-Do-Check-Act Step 1: Define the problem Measurement Method: # of heavy equipment that are out for repair, preventative maintenance or regular maintenance at any one given time. Why Measure: Reduce OT due to improved operational efficiency Next Improvement Step: Ensure Equipment Repair Tech is using same Work Done codes as Fleet.

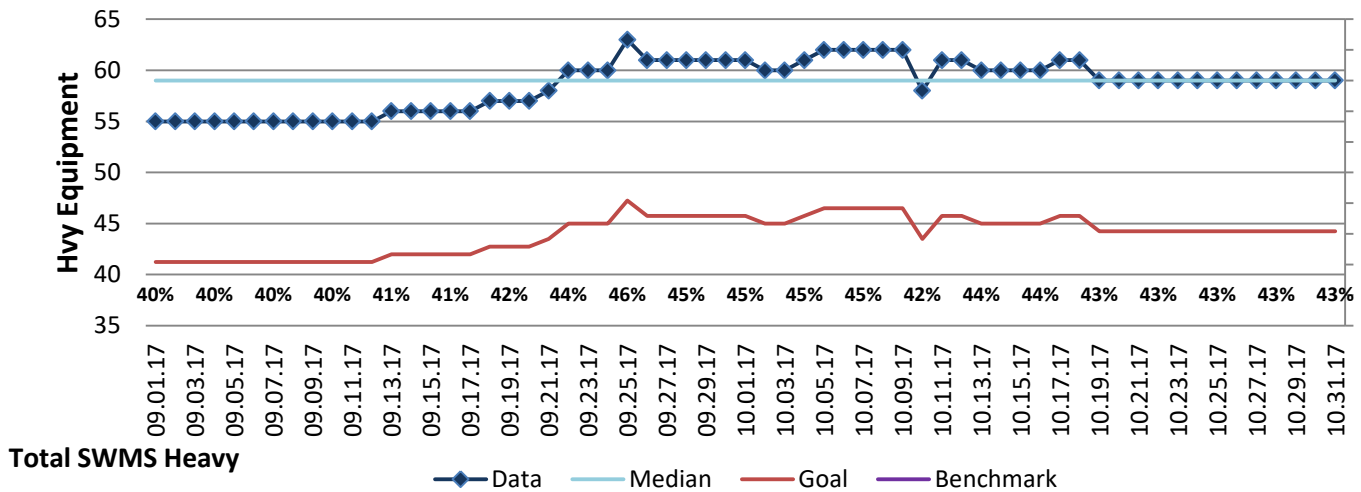
How Are We Doing?

10.01.17-10.31.17 1 Month Goal	10.01.17-10.31.17 1 Month Total		10.31.17 Goal	10.31.17 Actual	
1,396	1,861		44	59	
Hvy Equipment	Hvy Equipment		Hvy Equipment	Hvy Equipment	

Heavy Equipment Repair Log



Good



Heavy Equipment Repair Log: Average Days Out by Sub-Division (August 2015 - October 2017)

