

Heavy Equipment Repair Log

Public Works & Assets: SWMS



KPI Owner: Keith Hackett

Process: Overtime Management/Operational Efficiency

Baseline, Goal, & Benchmark	Source Summary	Continuous Improvement Summary
Baseline: 42 heavy equipment for Apr 2015 Goal: Reduce the number of heavy equipment out for repair or preventative maintenance at any given time by 25%. Benchmark: TBD	Data Source: SWMS Sharepoint Site Goal Source: Exective Decision (AD Hackett) Benchmark Source: TBD	Plan-Do-Check-Act Step 1: Define the problem Measurement Method: # of heavy equipment that are out for repair, preventative maintenance and regular maintenance at any one given time. Why Measure: Redue OT due to improved operational efficiency Next Improvement Step: Ensure Equipment Repair Tech is using same Work Done codes as fleet.

How Are We Doing?

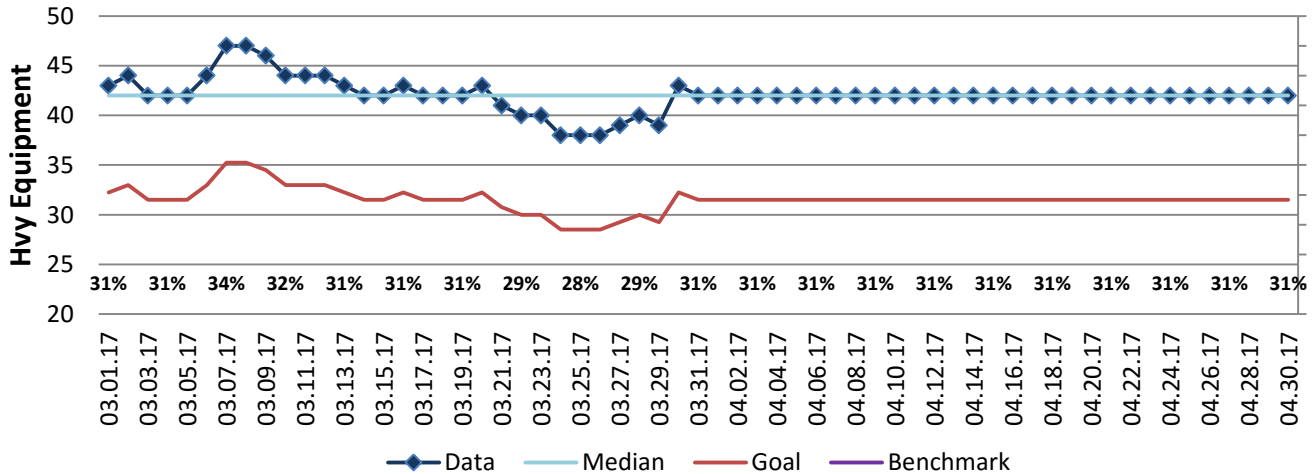
03.31.17-04.30.17 1 Month Goal	03.31.17-04.30.17 1 Month Total		04.30.17 Goal	04.30.17 Actual	
977	1,302		32	42	
Hvy Equipment	Hvy Equipment		Hvy Equipment	Hvy Equipment	

SWMS Total Heavy Equipment = 137

Heavy Equipment Repair Log



Good



Heavy Equipment Repair Log: Avg Days Out by Sub-Division (August 2015 - April 2017)

