

Hours Lost Due to Work Related Injury/Illness Public Works & Assets



KPI Owner: Vanessa Burns/Chris Scamahorne

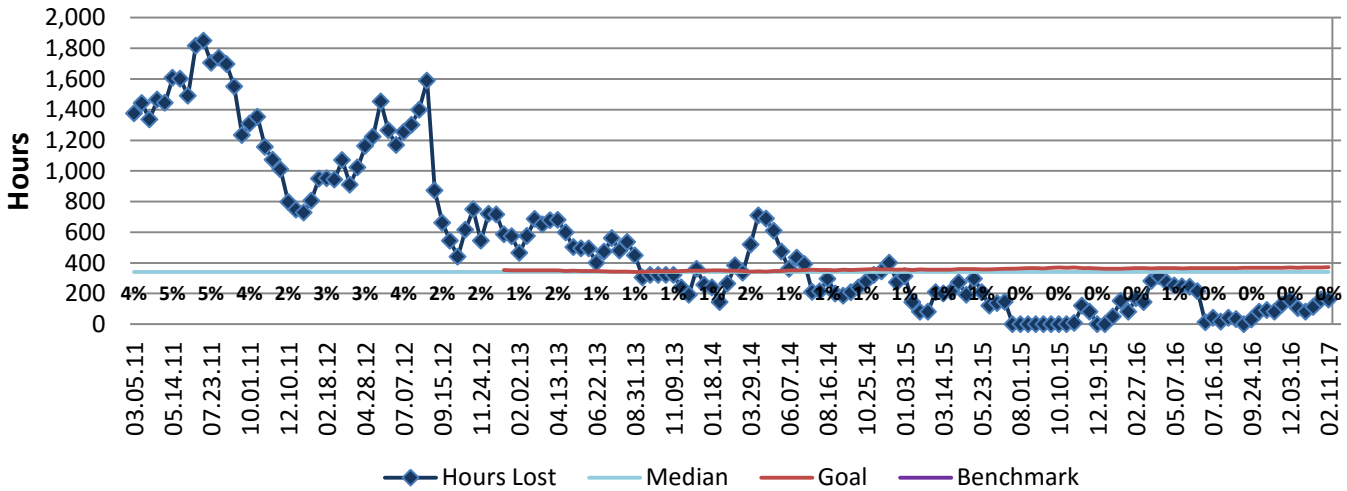
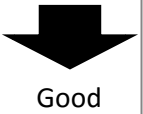
Process: Safety

Baseline, Goal, & Benchmark	Source Summary	Continuous Improvement Summary
Baseline: 3% FY12, 2% FY13 monthly avg rates Goal: Maintain the number of hours lost due to work related injuries/illnesses to 1% or less of the standard number of hours worked. Benchmark: TBD	Data Source: Payable Time PeopleSoft Goal Source: Scope Summary Benchmark Source: TBD	Plan-Do-Check-Act Step 8: Monitor and diagnose Measurement Method: The total number of hours per month employees were absent due to a work place injury or an illness contracted at work, rate calculated by dividing by total standard hours Why Measure: Minimize number & severity of workplace injuries/illness Next Improvement Step: Continue to track and monitor to ensure that 1% is maintained.

How Are We Doing?

02.14.16-02.11.17 12 Month Goal	02.14.16-02.11.17 12 Month Actual		01.29.17-02.11.17 Goal	01.29.17-02.11.17 Actual	
9,540	3,455	🚦	371	160	🚦
Hours	Hours		Hours	Hours	

Hours Lost Due to Work Related Injury/Illness



Root cause analysis is not necessary because there is no gap between the goal and current performance.