

Heavy Equipment Repair Log Public Works & Assets: SWMS



KPI Owner: Keith Hackett

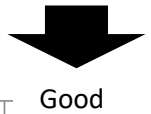
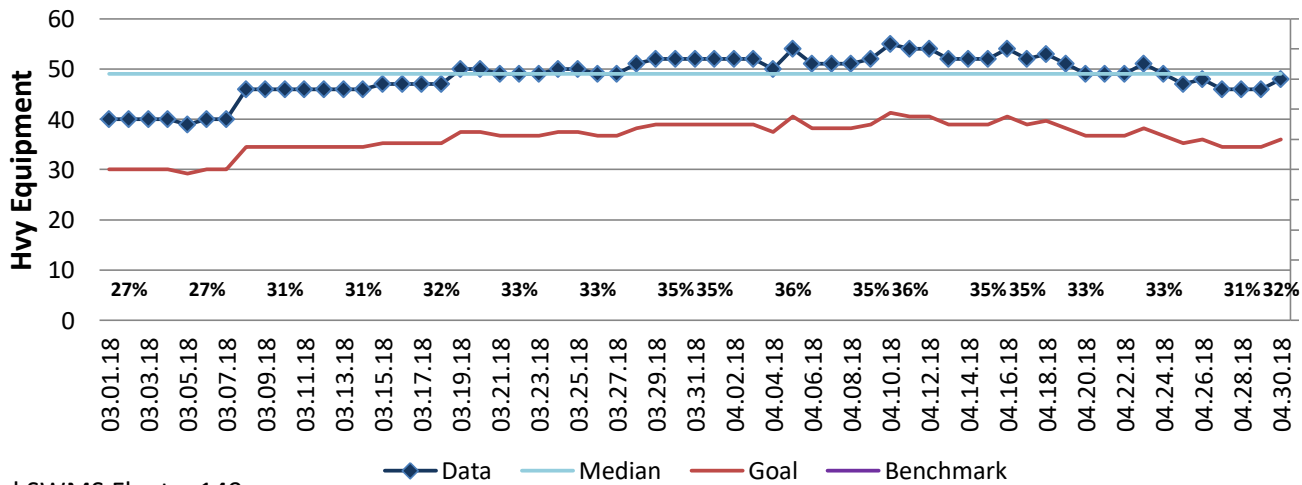
Process: Operations

Baseline, Goal, & Benchmark	Source Summary	Continuous Improvement Summary
Baseline: 42 heavy equipment for April 2015 Goal: Reduce the number of heavy equipment out for repair or preventative maintenance at any given time by 25%. Benchmark: TBD	Data Source: SWMS Sharepoint Site Goal Source: Executive Decision (Hackett) Benchmark Source: TBD	Plan-Do-Check-Act Step 1: Define the problem Measurement Method: # of heavy equipment that are out for repair, preventative maintenance or regular maintenance at any one given time. Why Measure: Reduce OT due to improved operational efficiency Next Improvement Step: Ensure Equipment Repair Tech is using same Work Done codes as Fleet.

How Are We Doing?

03.31.18-04.30.18 1 Month Goal	03.31.18-04.30.18 1 Month Total		04.30.18 Goal	04.30.18 Actual	
1,181	1,574		36	48	
Hvy Equipment	Hvy Equipment		Hvy Equipment	Hvy Equipment	

Heavy Equipment Repair Log



Heavy Equipment Repair Log - Longest Repairs for 2018

