

Hours Lost Due to Work Related Injury/Illness Office of Management & Budget



KPI Owner: Daniel Frockt

Process: Safety Management

Baseline, Goal, & Benchmark	Source Summary	Continuous Improvement Summary
Baseline: FY15 (Jul2014:0) Goal: Zero Hours Lost Due to Work Related Illness & Injury Benchmark: TBD	Data Source: Payable Time PeopleSoft Goal Source: Scope Summary Benchmark Source: TBD	Plan-Do-Check-Act Step 8: Monitor and diagnose Measurement Method: The total number of hours per month employees were absent due to a work place injury or an illness contracted at work, rate calculated by dividing by total standard hours Why Measure: Minimize number & severity of workplace injuries/illness Next Improvement Step:

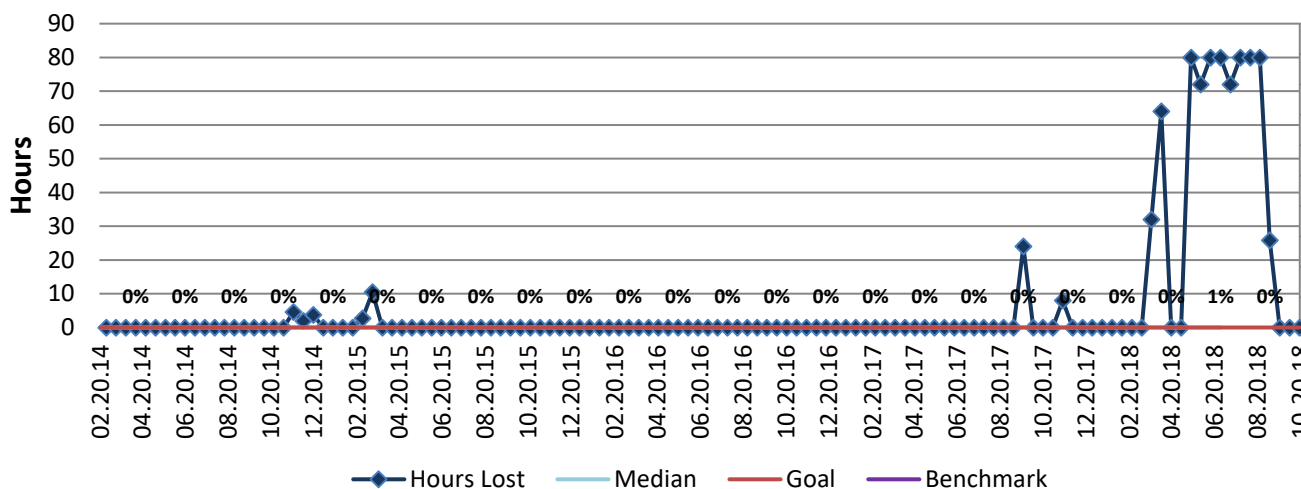
How Are We Doing?

10.21.17-10.20.18 12 Month Goal	10.21.17-10.20.18 12 Month Actual		10.07.18-10.20.18 Goal	10.07.18-10.20.18 Actual	
0	754	🚦	0	0	🚦
Hours	Hours		Hours	Hours	

Hours Lost Due to Work Related Injury/Illness



Good



No Pareto Available

