

# Hours Lost Due to Work Related Injury/Illness Codes & Regulations



KPI Owner: Debbie Howell

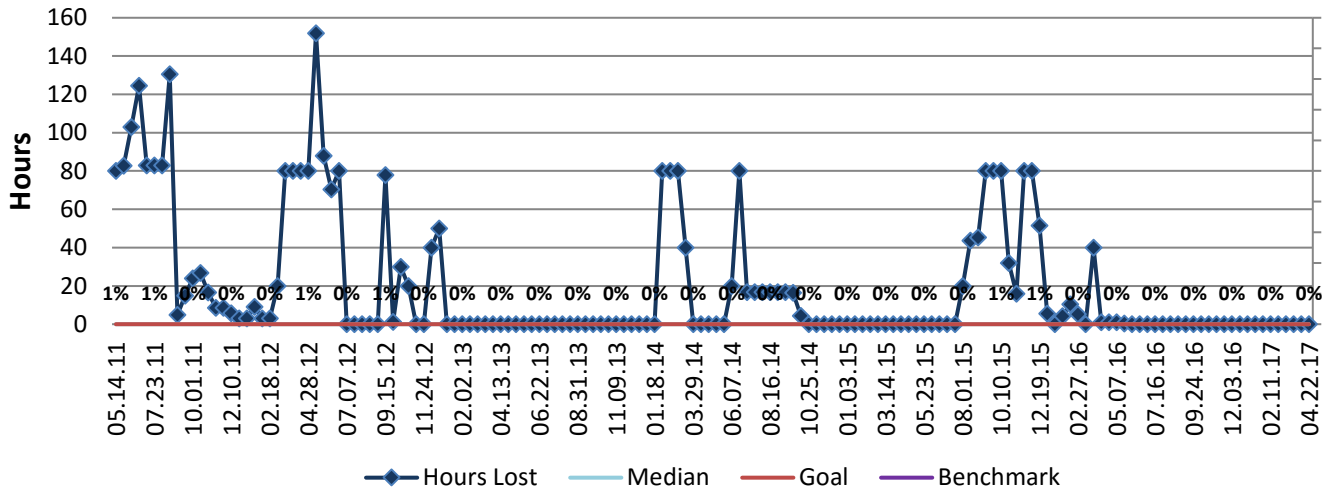
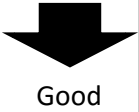
Process: Safety

Baseline, Goal, & Benchmark	Source Summary	Continuous Improvement Summary
Baseline: FY 12 Monthly average: 99 hours Goal: Zero hours lost due to work related illness and injury  Benchmark: TBD	Data Source: Payable Time PeopleSoft  Goal Source: Scope Summary  Benchmark Source: TBD	Plan-Do-Check-Act Step 8: Monitor and diagnose  Measurement Method: The total number of hours per month employees were absent due to a work place injury or an illness contracted at work, rate calculated by dividing by total standard hours  Why Measure: Minimize number & severity of workplace injuries/illness  Next Improvement Step: Analyze current safety programs and create safety action plan.

### How Are We Doing?

04.24.16-04.22.17 12 Month Goal	04.24.16-04.22.17 12 Month Actual		04.09.17-04.22.17 Goal	04.09.17-04.22.17 Actual	
<b>0</b>	<b>1</b>		<b>0</b>	<b>0</b>	
Hours	Hours		Hours	Hours	

## Hours Lost Due to Work Related Injury/Illness



**Root cause analysis is not necessary because there is no gap between the goal and current performance.**