

# % Single Family Permits Issued After 4 Days Codes & Regulations



KPI Owner: Paul Nicholson

Process: Permit Review

Baseline, Goal, & Benchmark	Source Summary	Continuous Improvement Summary
Baseline: 24.08% (Dec 2013 - Nov, 2014) Goal: Reduce defect rate from baseline of 24.08% to 22.88% (5% decrease) Benchmark: TBD	Data Source: Hansen Goal Source: Dept Management Team Benchmark Source: TBD	Plan-Do-Check-Act Step 4: Generate and prioritize potential solutions Measurement Method: Percent of Single Family permits issued, by month, with a turnaround time (intake through issuance) of greater than 4 days Why Measure: Monitor turnaround time relative to customer expectations Next Improvement Step: Codes and Regulations will analyze reasons for extended review periods and review to determine if goal is appropriate

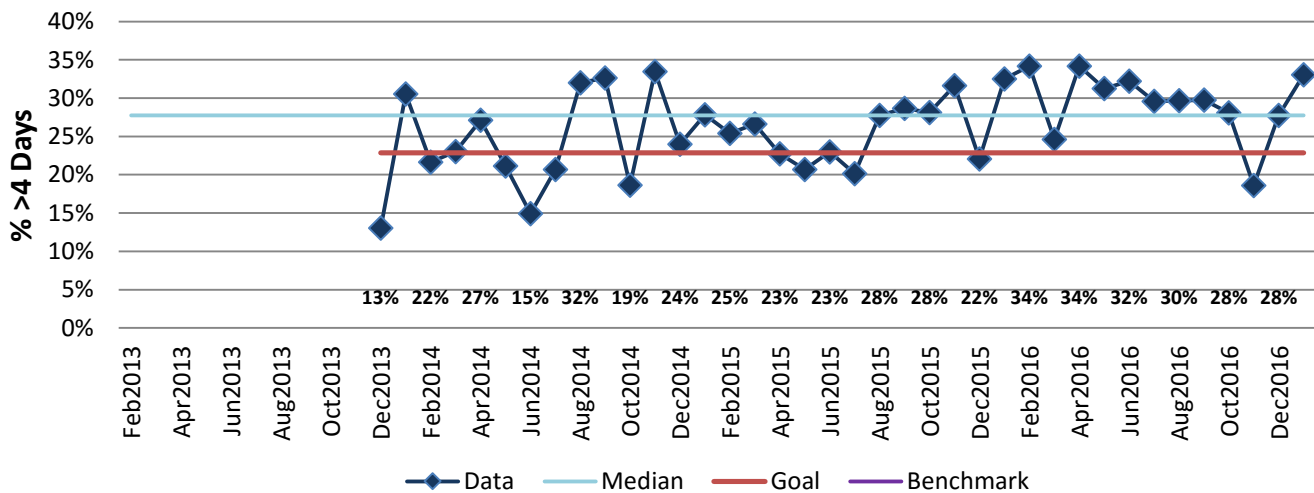
### How Are We Doing?

Feb2016-Jan2017 12 Month Goal	Feb2016-Jan2017 12 Month Actual		Jan2017 Goal	Jan2017 Actual	
<b>22.88%</b>	<b>29.42%</b>		<b>22.88%</b>	<b>33.04%</b>	
% >4 Days	% >4 Days		% >4 Days	% >4 Days	

## % Single Family Permits Issued After 4 Days



Good



**The seven basic quality tools, "5 Whys" technique, brainstorming and other methods will be applied to the measure graphed above. The purpose of using the tools/methods is to understand what makes performance less than desirable if performance is not best in class.**