

# Intake Metro Animal Services



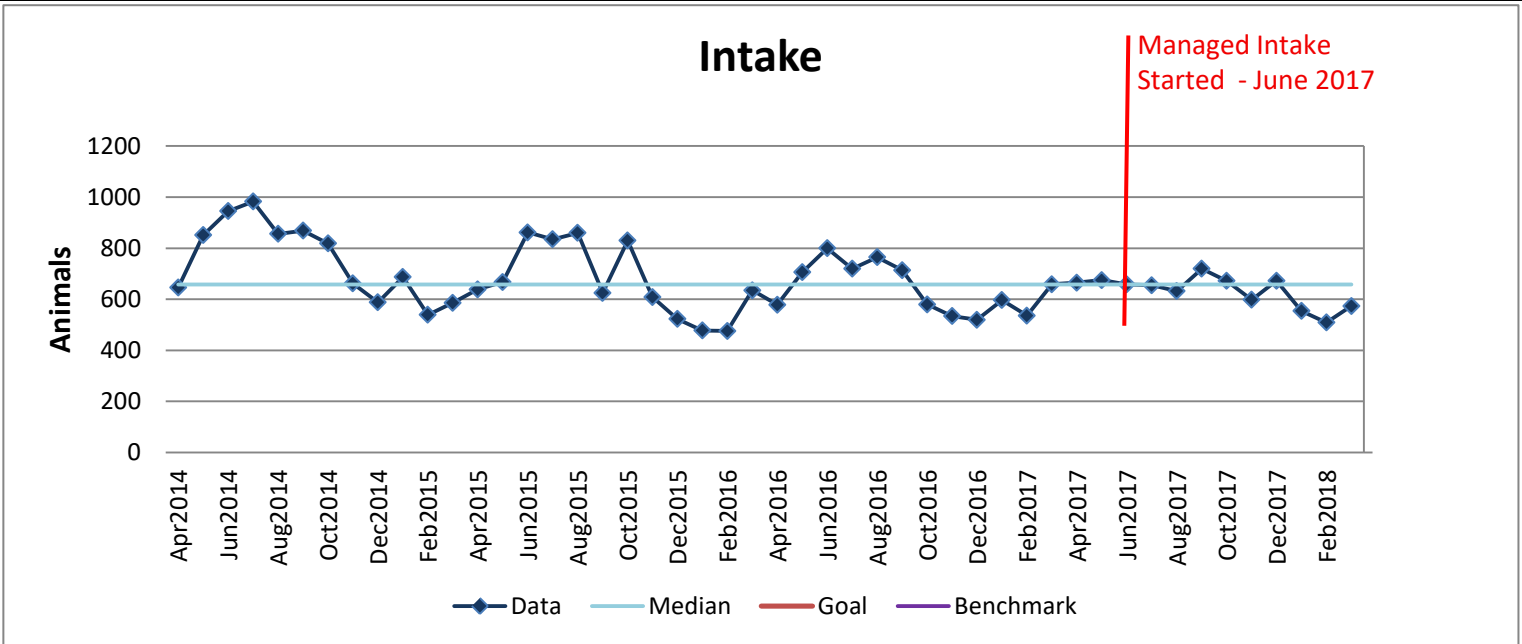
KPI Owner: Skip Kalkhof

Process: Intake

Baseline, Goal, & Benchmark	Source Summary	Continuous Improvement Summary
Baseline: CY14 - 8,984 Animals Goal: N/A  Benchmark: TBD	Data Source: Chameleon  Goal Source: N/A  Benchmark Source: TBD	Measurement Method: The number of animals that Metro Animal Services takes in during a month  Why Measure: Intake affects the capacity of Metro Animal Services Next Improvement Step: Managed Intake Project

## How Are We Doing?

Apr2017-Mar2018 12 Month Goal	Apr2017-Mar2018 12 Month Actual		Mar2018 Goal	Mar2018 Actual	
<b>TBD</b>	<b>7,585</b>	⬇	<b>TBD</b>	<b>574</b>	⬆
<b>Animals</b>	<b>Animals</b>		<b>Animals</b>	<b>Animals</b>	



Root cause analysis is not necessary because there is no gap between the goal and current performance.