

WIC Participation/Enrollment Ratio Public Health & Wellness



KPI Owner: Director of Community Health and Prevention

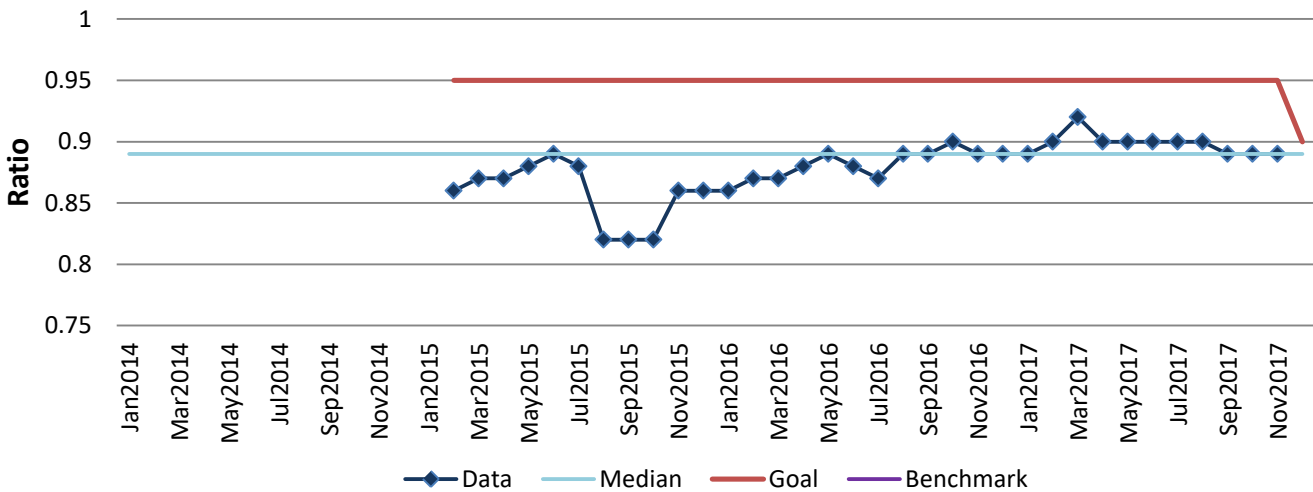
Process: Inform/Educate/Empower

Baseline, Goal, & Benchmark	Source Summary	Continuous Improvement Summary
Baseline: Jan 2015 - 0.86 Goal: Achieve a 0.90 enrollment-to-participation ratio each month. Changed this goal this month from 0.95 to 0.90. Benchmark: TBD	Data Source: KY WIC program Goal Source: Executive Leadership Benchmark Source: TBD	Plan-Do-Check-Act Step 6: Validate that solutions work Measurement Method: Participation is determined by the state as the number of enrolled individuals who attend scheduled appointments and use their WIC benefits. It is 3 months behind. Why Measure: Ensure we retain participants in the program. Next Improvement Step: Standardize and replicate solutions

How Are We Doing?

Jan2017-Dec2017 12 Month Goal	Jan2017-Dec2017 12 Month Actual		Dec2017 Goal	Dec2017 Actual	
0.90	0.90	🚦	0.90	0.89	🚦
Ratio	Ratio		Ratio	Ratio	

WIC Participation/Enrollment Ratio



Jan2017-Dec2017 Average Ratio

