

Hours Lost Due to Work Related Injury/Illness Resilience & Community Services



KPI Owner: Gena Redmon

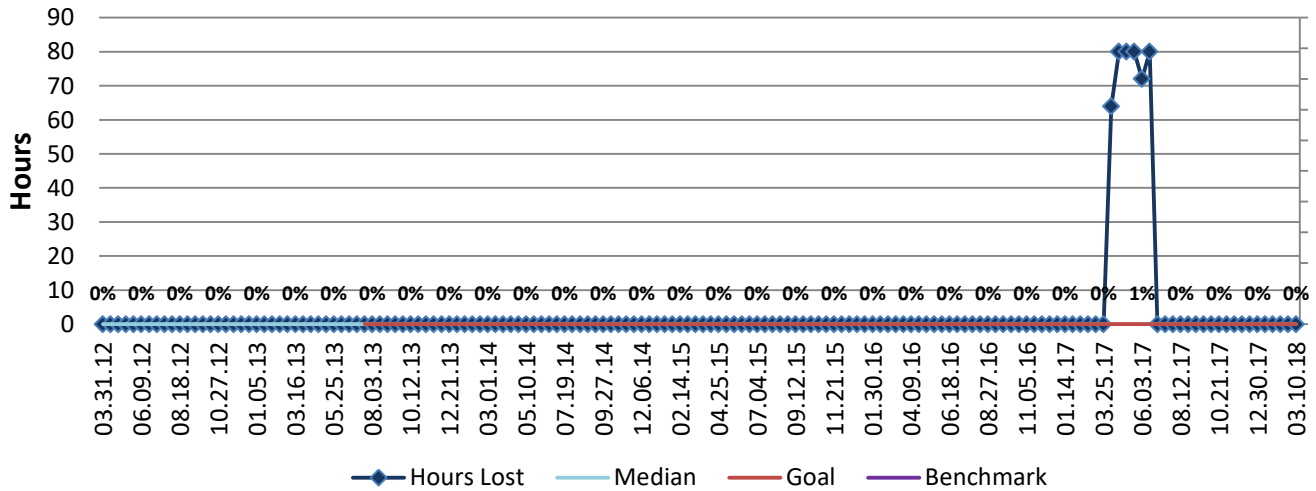
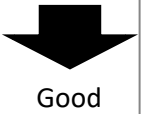
Process: Safety

Baseline, Goal, & Benchmark	Source Summary	Continuous Improvement Summary
Baseline: 0 Goal: 0 Benchmark: TBD	Data Source: Payable Time PeopleSoft Goal Source: Scope Summary Benchmark Source: TBD	N/A - Input Measure Measurement Method: The total number of hours per month employees were absent due to a work place injury or an illness contracted at work, rate calculated by dividing by total standard hours Why Measure: Minimize number & severity of workplace injuries/illness Next Improvement Step: Monitor

How Are We Doing?

03.12.17-03.10.18 12 Month Goal	03.12.17-03.10.18 12 Month Actual		02.25.18-03.10.18 Goal	02.25.18-03.10.18 Actual	
0	456		0	0	
Hours	Hours		Hours	Hours	

Hours Lost Due to Work Related Injury/Illness



Root cause analysis is not necessary because there is no gap between the goal and current performance.