

Officer Involved Accidents Louisville Metro Police Department



KPI Owner: Assistant Chief Robert Schroeder

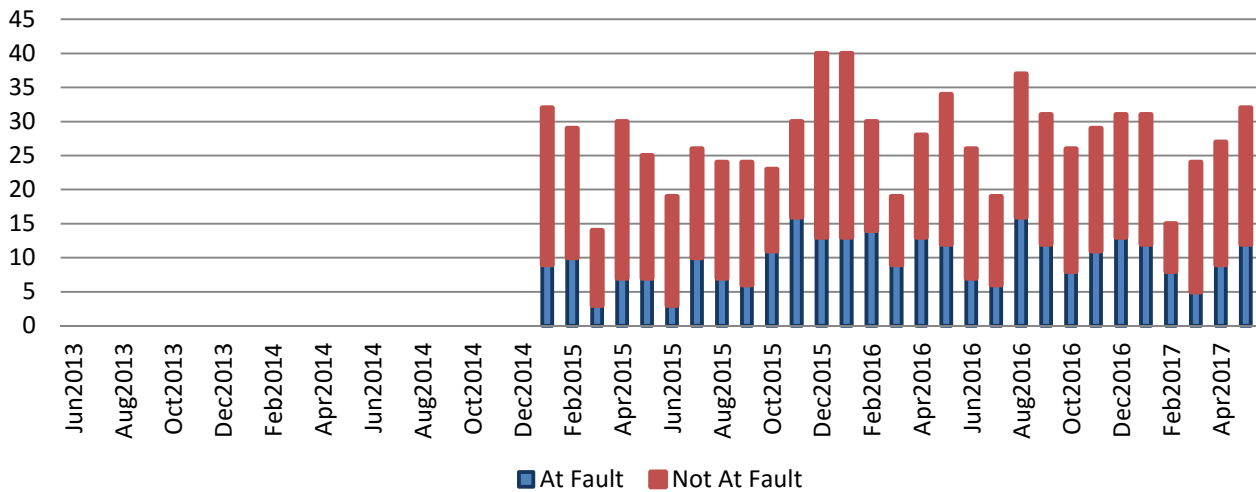
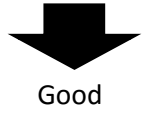
Process: Traffic Safety

Baseline, Goal, & Benchmark	Source Summary	Continuous Improvement Summary
Baseline: TBD Goal: No more than 7 "At Fault" and 15 "Not at Fault" accidents every calendar month Benchmark: TBD	Data Source: LMPD Goal Source: TBD Benchmark Source: N/A	Plan-Do-Check-Act Step 8: Monitor and diagnose Measurement Method: # of officer involved accidents that involve a motor vehicle Why Measure: To ensure that LMPD officers are operating departmental vehicles in a safe manner Next Improvement Step: Continue to monitor and diagnose

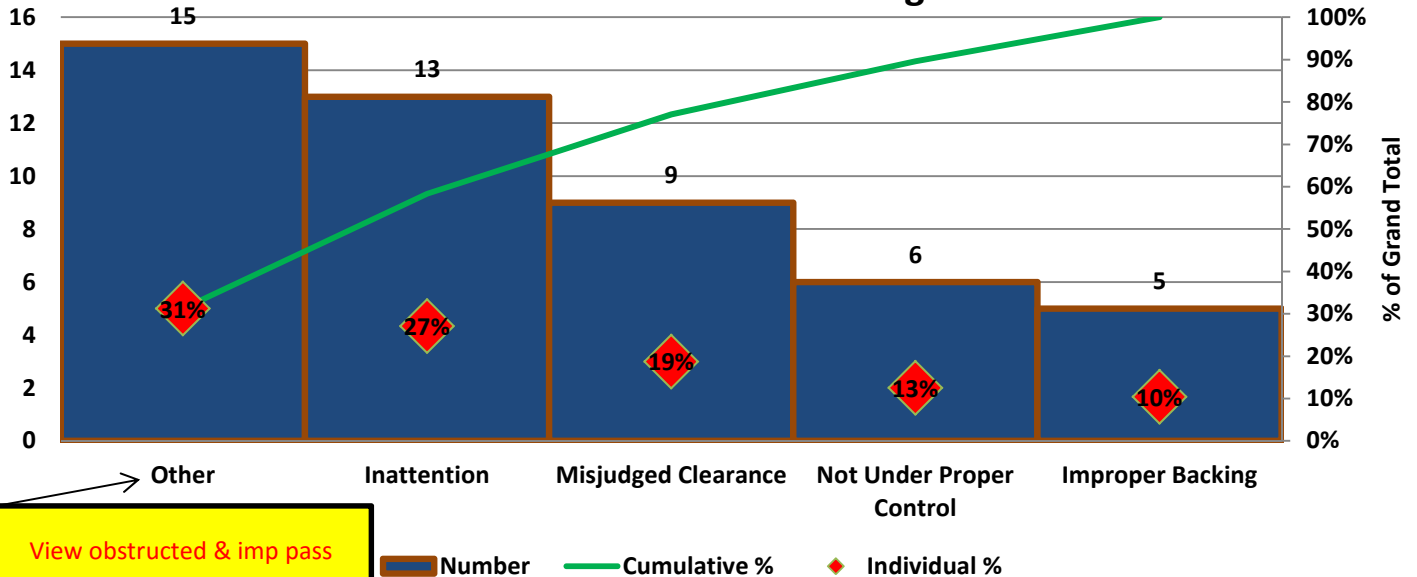
How Are We Doing?

YTD 2017 Goal At Fault Not Fault	YTD 2017 Actual At Fault Not Fault			May 2017 Goal At Fault Not Fault	May 2017 At Fault Not Fault		
35 75	48 89			7 15	12 20		
Accidents	Accidents			Accidents	Accidents		

Officer Involved Accidents



At Fault Accidents Contributing Factors



View obstructed & imp pass