

UCR Part 1 Property Crime Louisville Metro Police Department



KPI Owner: Assistant Chief Kim Kraeszig

Crime Control

Baseline, Goal, & Benchmark	Source Summary	Continuous Improvement Summary
CY12, 28,606 incidents Goal: To reduce Part 1 Crime by 3% each calendar year Benchmark: TBD	Data Source: FBI UCR Report Goal Source: Mayor;s Strategic Plan Goal # 3A Benchmark Source: TBD	Plan-Do-Check-Act Step 8: Monitor and diagnose Measurement Method: # of UCR Part 1 Property Crimes Why Measure: To ensure the LMPD is directing resources to reduce property crimes and prevent property losses for our citizens and visitors Next Improvement Step: Continue to monitor and diagnose

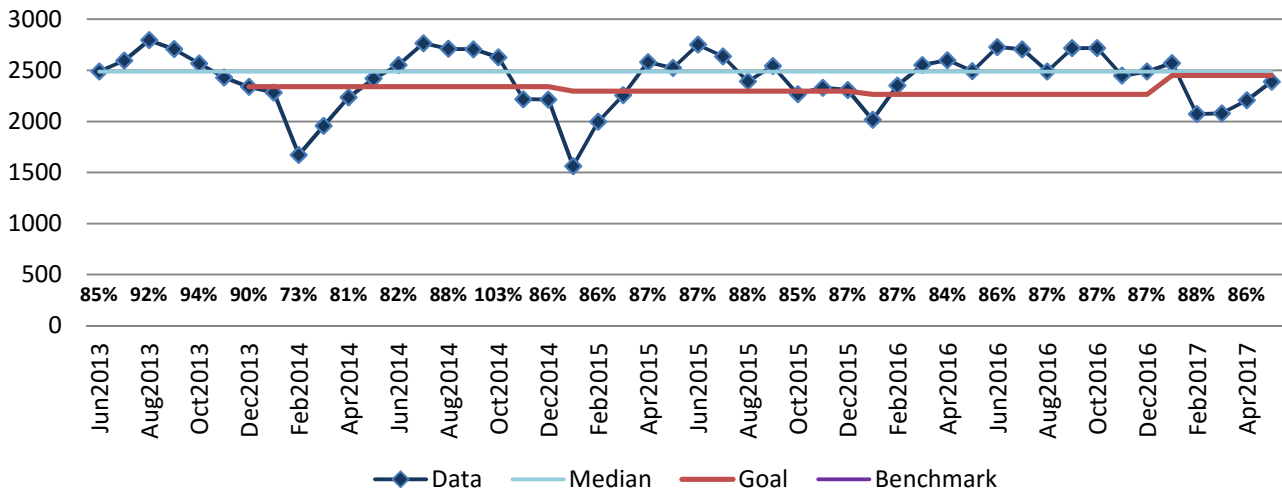
How Are We Doing?

Jun2016-May2017 12 Month Goal	Jun2016-May2017 12 Month Actual		May2017 Goal	May2017 Actual	
28,112	29,614	🚦	2,450	2,390	🚦
Units	Units		Units	Units	

UCR Part 1 Property Crime



Good



Jun2016-May2017 Pareto Analysis

