

UCR Part 1 Violent Crime Louisville Metro Police Department



KPI Owner: Assistant Chief Kim Kraeszig

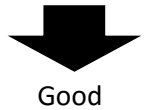
Process: Crime Control

Baseline, Goal, & Benchmark	Source Summary	Continuous Improvement Summary
Baseline: CY12, 3989 incidents Goal: To reduce Part 1 Crime by 3% each calendar year Benchmark: TBD	Data Source: FBI UCR Crime Report Goal Source: Mayor's Strategic Plan Goal #3A Benchmark Source: TBD	Plan-Do-Check-Act Step 8: Monitor and diagnose Measurement Method: # of UCR Part 1 Violent Crimes Why Measure: To ensure the LMPD is directing resources to reduce violent crimes and ensure the safety of our citizens and visitors Next Improvement Step: Continue to monitor and diagnose

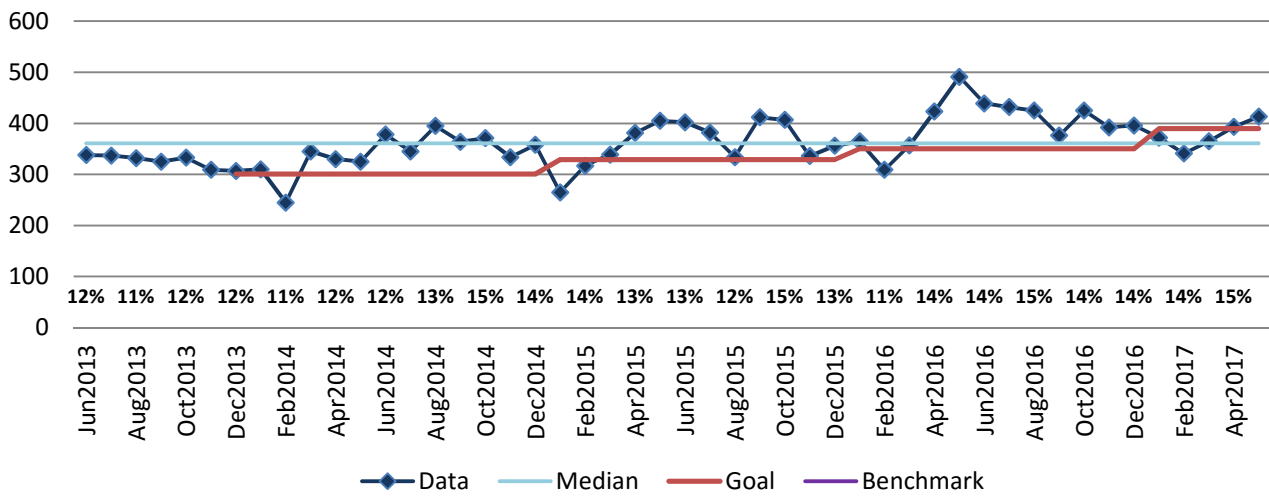
How Are We Doing?

Jun2016-May2017 12 Month Goal	Jun2016-May2017 12 Month Actual		May2017 Goal	May2017 Actual	
4,400	4,769		390	413	
Units	Units		Units	Units	

UCR Part 1 Violent Crime



Good



Jun2016-May2017 Pareto Analysis

