

# Hours Lost Due to Work Related Injury/Illness Louisville Metro Police Department



KPI Owner: Cheryl Tripplett

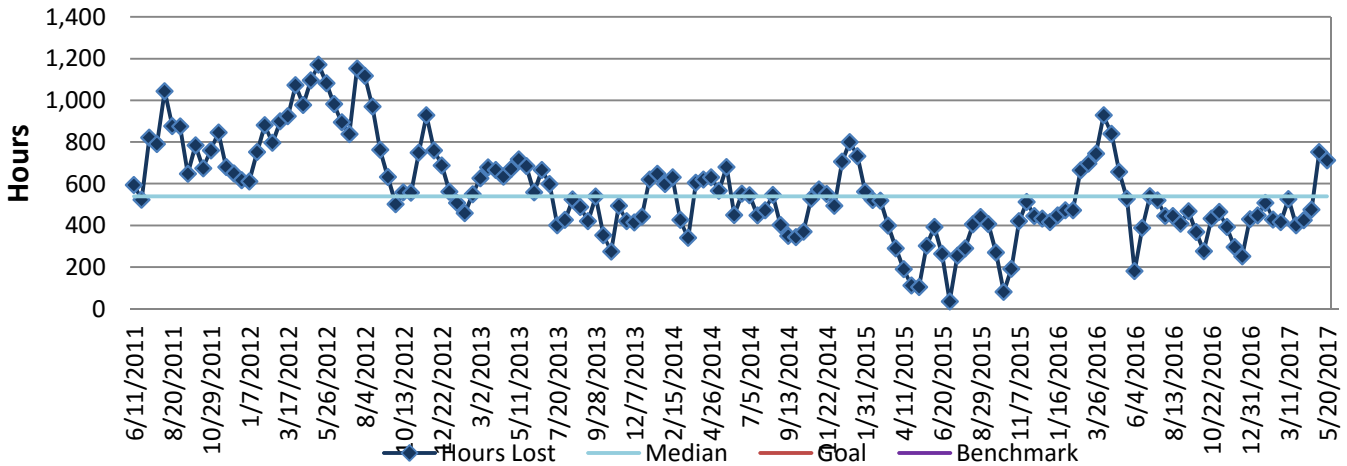
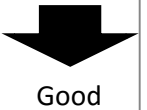
Process: Time and Attendance

Baseline, Goal, & Benchmark	Source Summary	Continuous Improvement Summary
Baseline: CY12, 1% Goal: 1% of Total Opportunities  Benchmark: TBD	Data Source: Payable Time PeopleSoft  Goal Source: Scope Summary  Benchmark Source: TBD	Plan-Do-Check-Act Step 8: Monitor and diagnose  Measurement Method: The total number of hours per month employees were absent due to a work place injury or an illness contracted at work, rate calculated by dividing by total standard hours  Why Measure: Minimize number & severity of workplace injuries/illness  Next Improvement Step: Continue to monitor and diagnose

### How Are We Doing?

05.22.16-05.20.17 12 Month Goal	05.22.16-05.20.17 12 Month Actual		05.07.17-05.20.17 Goal	05.07.17-05.20.17 Actual	
<b>34,561</b>	<b>11,391</b>		<b>1,259</b>	<b>712</b>	
Hours	Hours		Hours	Hours	

## Hours Lost Due to Work Related Injury/Illness



**The seven basic quality tools, "5 Whys" technique, brainstorming and other methods will be applied to the measure graphed above. The purpose of using the tools/methods is to understand what makes performance less than desirable if performance is not best in class.**