

UCR Part 1 Property Crime Louisville Metro Police Department



KPI Owner: Assistant Chief Shara Parks

Process: Crime Control

Baseline, Goal, & Benchmark	Source Summary	Continuous Improvement Summary
Baseline: CY12, 28,606 incidents Goal: To reduce Part 1 Crime by 3% each calendar year Benchmark: TBD	Data Source: FBI UCR Crime Report Goal Source: Mayor's Strategic Plan Goal #3A Benchmark Source: TBD	Plan-Do-Check-Act Step 8: Monitor and diagnose Measurement Method: # of Part 1 Property Crimes Why Measure: To ensure the LMPD is directing resources to reduce property crimes and prevent property losses for our citizens and visitors Next Improvement Step: Continue to monitor and diagnose

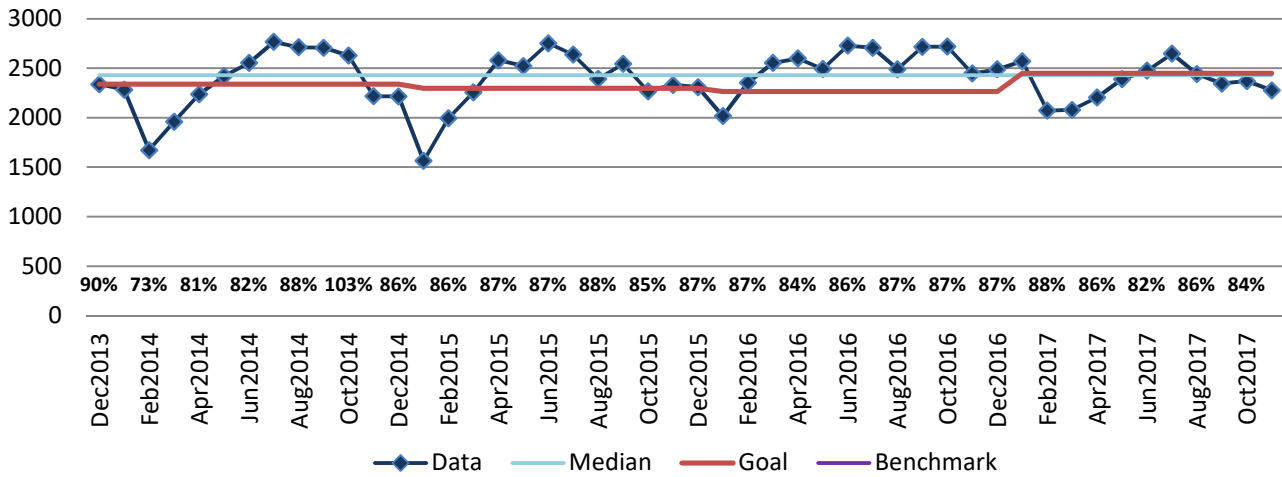
How Are We Doing?

Dec2016-Nov2017 12 Month Goal	Dec2016-Nov2017 12 Month Actual		Nov2017 Goal	Nov2017 Actual	
29,216	28,363		2,450	2,276	
Units	Units		Units	Units	

UCR Part 1 Property Crime



Good



2017 YTD UCR Part 1 Property Crime

