

All UCR Part 1 Crime Louisville Metro Police Department



KPI Owner: Assistant Chief Shara Parks

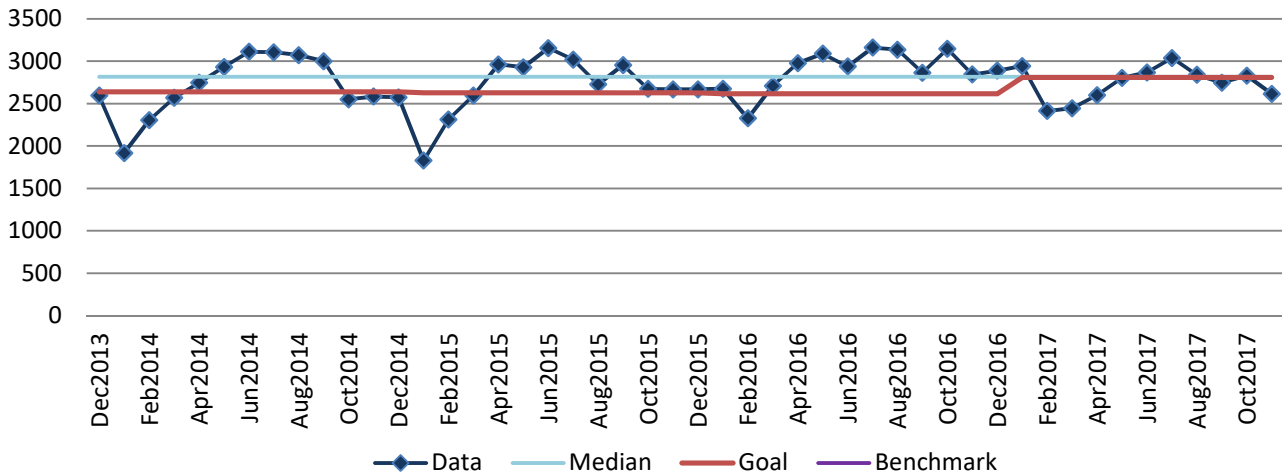
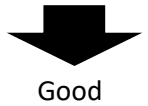
Process: Crime Control

Baseline, Goal, & Benchmark	Source Summary	Continuous Improvement Summary
Baseline: CY12, 32,595 Incidents Goal: To reduce Part 1 Crime by 3% each calendar year Benchmark: TBD	Data Source: FBI UCR Goal Source: Mayor's Strategic Plan Goal # 3A Benchmark Source: TBD	Plan-Do-Check-Act Step 8: Monitor and diagnose Measurement Method: # of UCR Part 1 Crimes Why Measure: To ensure the LMPD is directing resources to reduce crime and ensure the safety of our citizens and visitors Next Improvement Step: Continue to monitor and diagnose

How Are We Doing?

Dec2016-Nov2017 12 Month Goal	Dec2016-Nov2017 12 Month Actual		Nov2017 Goal	Nov2017 Actual	
33,505	33,025		2,808	2,614	
Units	Units		Units	Units	

All UCR Part 1 Crime



2017 YTD All UCR Part 1 Crime

