

Lost Time Injury Rate (cases with days away from work) Louisville Metro Police Department



KPI Owner: Cheryl Triplett

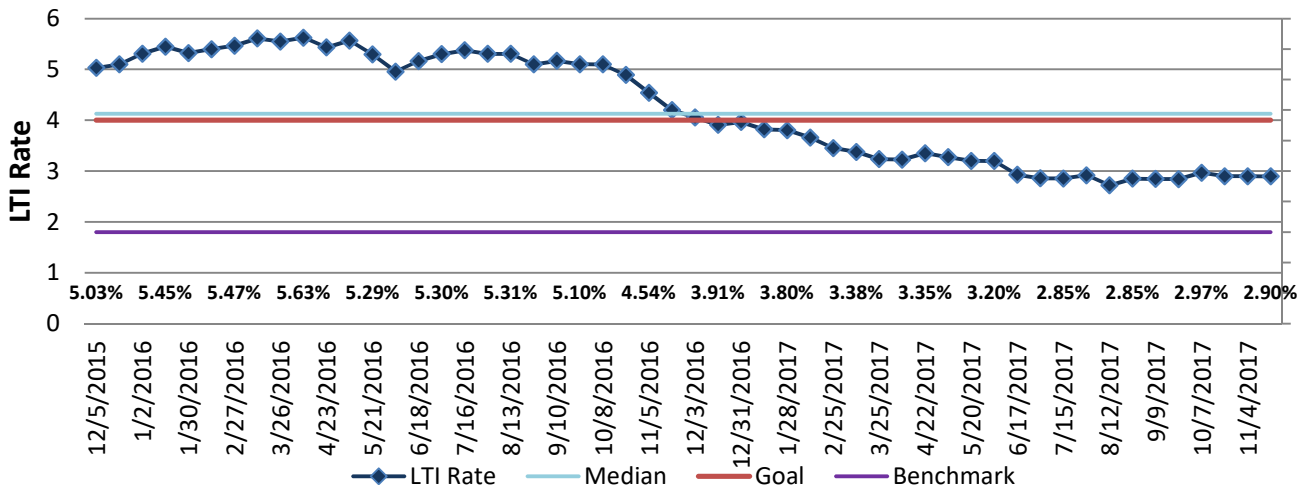
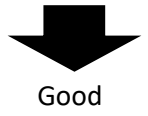
Process: Leave Management

Baseline, Goal, & Benchmark	Source Summary	Continuous Improvement Summary
Baseline: TBD Goal: Rate of no more than 4 per 100 Benchmark: 1.8% all local gov Nov2013	Data Source: OSHA Logs & Payable Time Goal Source: Scope Summary Benchmark Source: Bureau Labor Statistics	Plan-Do-Check-Act Step 8: Monitor and diagnose Measurement Method: In a 12 month period, # of OSHA recordables with lost work days times 200,000 divided by the total # of hours worked Why Measure: minimize number & severity of workplace injuries/illness Next Improvement Step: Continue to monitor and diagnose

How Are We Doing?

12.06.15-11.18.17 Rolling 52wk Avg Goal	12.06.15-11.18.17 Rolling 52wk Avg		11.20.16-11.18.17 Goal	11.20.16-11.18.17 Actual	
4.00	3.23		4.00	2.90	
LTI Rate	LTI Rate		LTI Rate	LTI Rate	

Lost Time Injury Rate (cases with days away from work)



FRACTURE, BRUISE, DISLOC

11.20.16-11.18.17 Pareto Analysis

