

# Officer Involved Accidents Louisville Metro Police Department



KPI Owner: Assistant Chief Robert Schroeder

Process: Traffic Safety

Baseline, Goal, & Benchmark	Source Summary	Continuous Improvement Summary
Baseline: TBD Goal: No more than 7 "at fault" and 15 "not at fault" accidents every calendar month Benchmark: TBD	Data Source: LMPD Goal Source: TBD Benchmark Source: N/A	Plan-Do-Check-Act Step 8: Monitor and diagnose Measurement Method: # of officer involved accidents that involve a motor vehicle Why Measure: To ensure that LMPD officers are operating departmental vehicles in a safe manner Next Improvement Step: Continue to monitor and diagnose

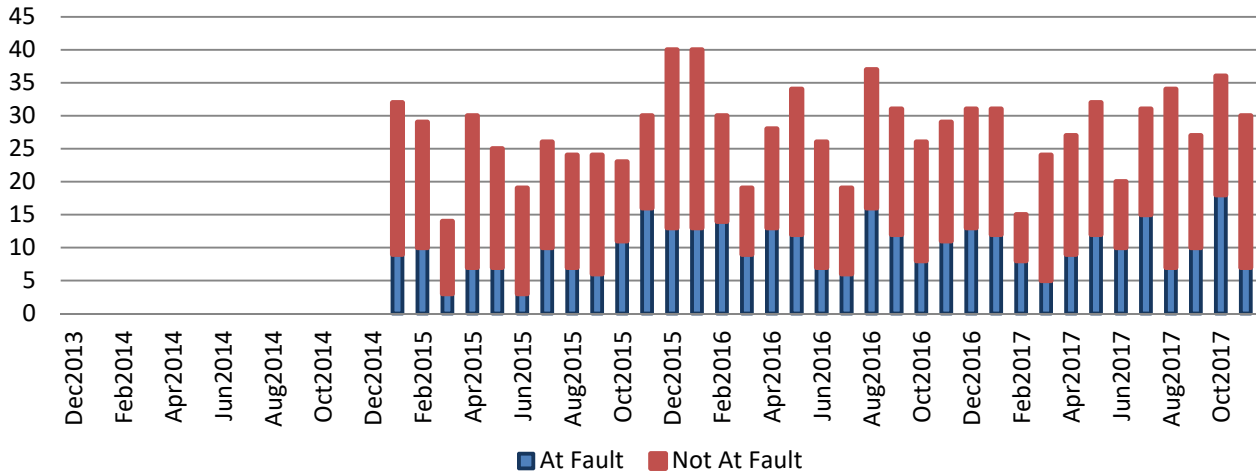
## How Are We Doing?

Dec2016-Nov2017 12 Month Goal	Dec2016-Nov2017 12 Month Actual		Nov2017 Goal	Nov2017 Actual	
<b>84</b>	<b>126</b>		<b>7</b>	<b>7</b>	
Units	Units		Units	Units	

## Officer Involved Accidents



Good



Fail to yield right-of-way, improper passing and backing

## At Fault Accidents Contributing Factors

