

# Shootings Louisville Metro Police Department



KPI Owner: Assistant Chief Shara Parks

Process: Public Safety

Baseline, Goal, & Benchmark	Source Summary	Continuous Improvement Summary
Baseline: CY13, 226 Goal: To reduce the number of shootings in Metro Louisville Benchmark: N/A	Data Source: FBI UCR Crime Report Goal Source: Mayor's Strategic Plan Goal #3A Benchmark Source: N/A	Plan-Do-Check-Act Step 8: Monitor and diagnose Measurement Method: To ensure the LMPD is directing its resources to keep citizens of Metro Louisville safe Why Measure: To ensure the LMPD is directing its resources to keep citizens of Metro Louisville safe Next Improvement Step: Continue to monitor and diagnose

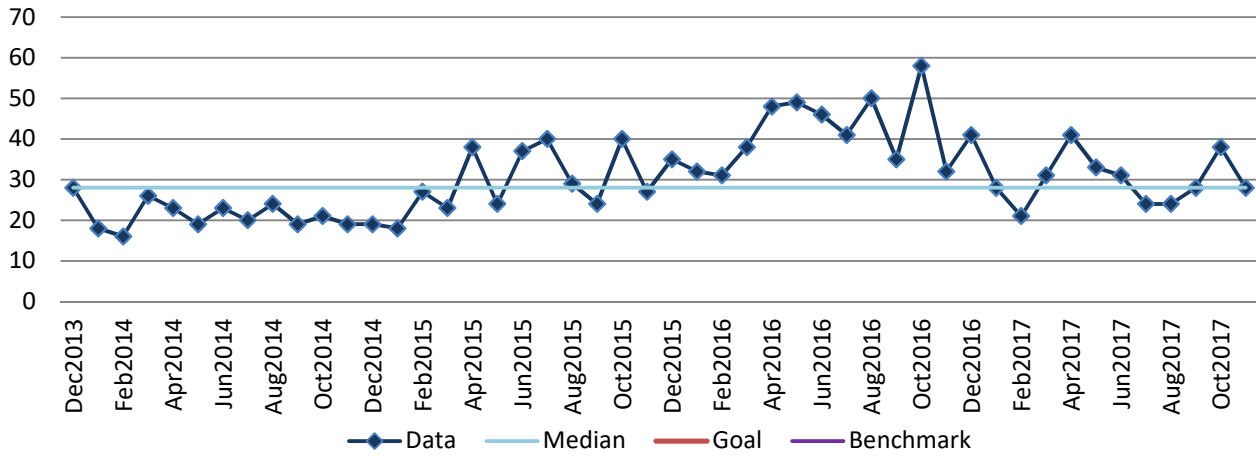
### How Are We Doing?

Dec2015-Nov2016 12 Month Actual	Dec2016-Nov2017 12 Month Actual		Nov2016 Actual	Nov2017 Actual	
<b>495</b>	<b>368</b>		<b>32</b>	<b>28</b>	
<b>Units</b>	<b>Units</b>		<b>Units</b>	<b>Units</b>	

## Shootings



Good



## Shootings by Year to Date

