

Hours Not Worked Public Health & Wellness



KPI Owner:

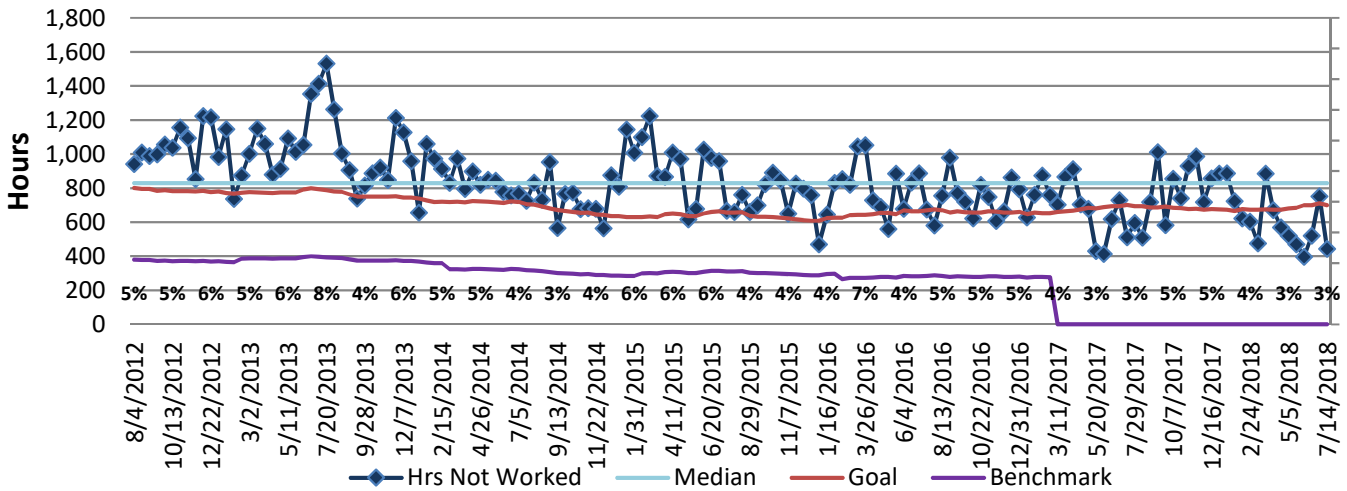
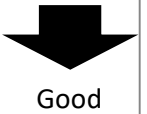
Process:

Baseline, Goal, & Benchmark	Source Summary	Continuous Improvement Summary
Baseline: FY12 monthly average rate of 4.5% Goal: Reduce hours not worked to 4% of the total hours earned in a month by June 30, 2015. Benchmark: Local Government Rate of 1.7%	Data Source: Payable Time PeopleSoft Goal Source: Scope Summary Benchmark Source: Bureau Labor Statistics	Plan-Do-Check-Act Step 8: Monitor and diagnose Measurement Method: Total # of hrs per month employees were not at work performing normal job functions (excludes vacations & holidays), rate calculated by dividing by total standard hours Why Measure: Better understand culture impact on employee attendance Next Improvement Step: Ensure policies are being applied and enforced

How Are We Doing?

07.16.17-07.14.18 12 Month Goal	07.16.17-07.14.18 12 Month Actual		07.01.18-07.14.18 Goal	07.01.18-07.14.18 Actual	
17,764	17,942	⬇️	699	445	⬆️
Hours	Hours		Hours	Hours	

Hours Not Worked



07.16.17-07.14.18 Pareto Analysis

