

WIC Participation/Enrollment Ratio Public Health & Wellness



KPI Owner: Jennifer Bowman

Process: WIC

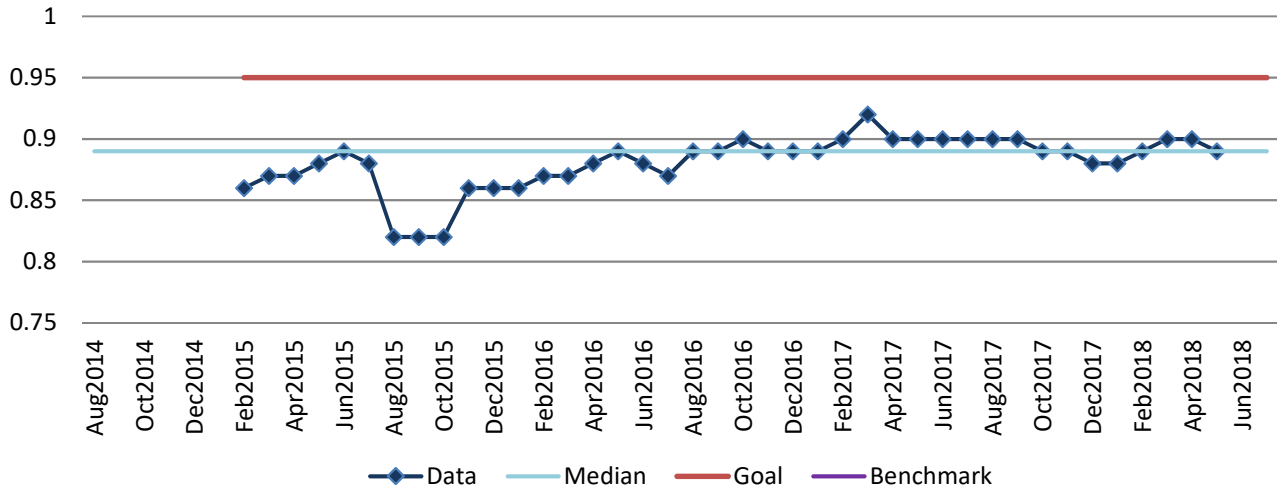
Baseline, Goal, & Benchmark	Source Summary	Continuous Improvement Summary
Baseline: Jan 2015 - 0.86 Goal: Achieve a 0.95 enrollment-to-participation ratio each month. Benchmark: TBD	Data Source: KY WIC Program Goal Source: Executive Leadership Benchmark Source: TBD	Plan-Do-Check-Act Step 8: Monitor and diagnose Measurement Method: Participation is determined by the state as the number of enrolled individuals who attend scheduled appointments and use their WIC benefits. It is 2-3 months behind. Why Measure: Ensure we retain participants in the program. Next Improvement Step: Continue to monitor

How Are We Doing?

Aug2017-Jul2018 12 Month Goal	Aug2017-Jul2018 12 Month Actual		Jul2018 Goal	Jul2018 Actual		
0.95	0.89			0.95		N/A
Units	Units			Units		Units

WIC Participation/Enrollment Ratio

Good



Aug2017-Jul2018 Pareto Analysis

