

Lost Time Injury Rate (cases with days away from work) Fleet & Facilities



KPI Owner: Cathy Duncan

Process: Safety Culture

Baseline, Goal, & Benchmark	Source Summary	Continuous Improvement Summary
Baseline: 2016 rate of 4.39 Goal: Reduce LTI rate to 3.5 by the end of FY 2017 Benchmark: 1.8% all local gov Nov2013	Data Source: OSHA Logs & Payable Time Goal Source: Scope Summary Benchmark Source: Bureau Labor Statistics	Plan-Do-Check-Act Step 5: Pilot short term and/or long term solutions Measurement Method: In a 12 month period, # of OSHA recordables with lost work days times 200,000 divided by the total # of hours worked Why Measure: minimize number & severity of workplace injuries/illness Next Improvement Step: Safety culture and process improvement.

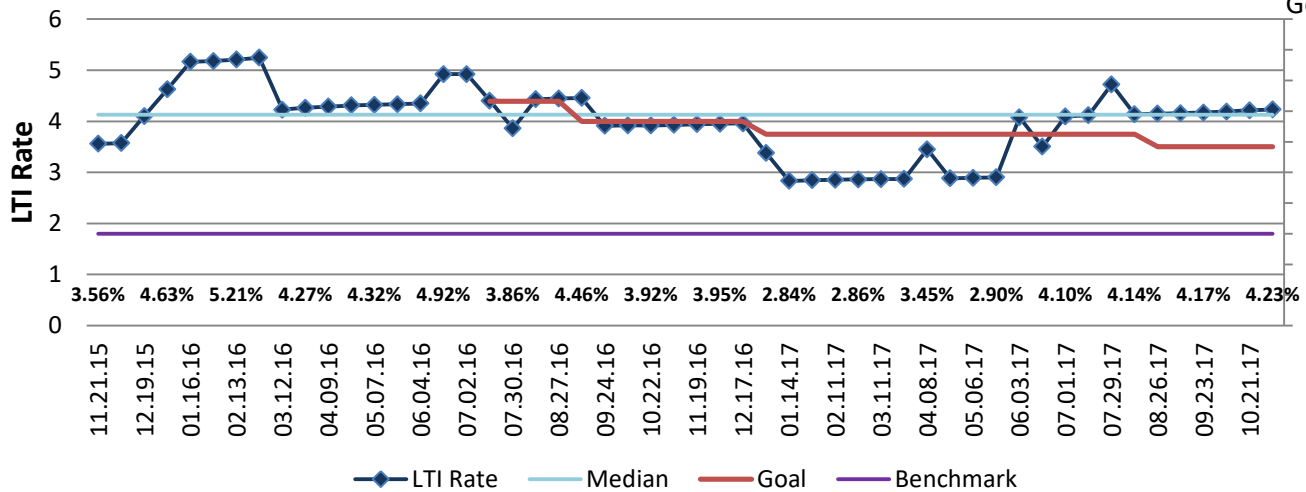
How Are We Doing?

11.22.15-11.04.17 Rolling 52wk Avg Goal	11.22.15-11.04.17 Rolling 52wk Avg		11.06.16-11.04.17 Goal	11.06.16-11.04.17 Actual	
3.72	3.63	🚦	3.50	4.23	🚦
LTI Rate	LTI Rate		LTI Rate	LTI Rate	

Lost Time Injury Rate (cases with days away from work)



Good



11.06.16-11.04.17 Pareto Analysis

