

Turnover Rate Excluding Temporary and Seasonal Public Works & Assets



KPI Owner: Julie Toler

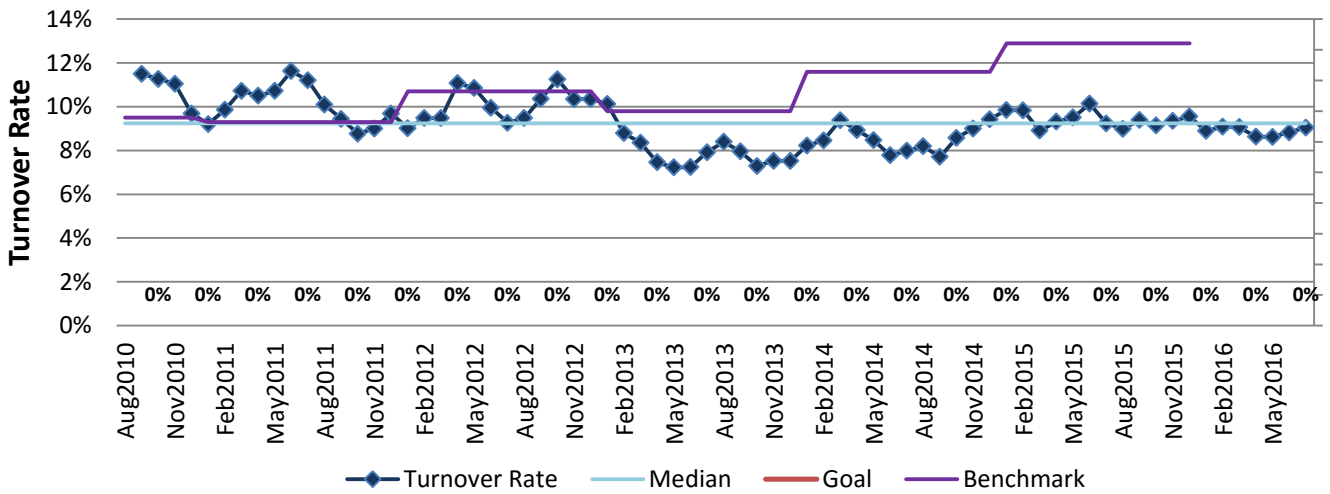
Process: Retention Management

Baseline, Goal, & Benchmark	Source Summary	Continuous Improvement Summary
Baseline: 0.09% for Jul 2016 Goal: TBD Benchmark: 12.9% state/local gov 2015	Data Source: PeopleSoft Goal Source: TBD Benchmark Source: TBD	Plan-Do-Check-Act Step 1: Define the problem Measurement Method: # of emps who left Metro (excluding temporary or seasonal) in a 12 month period divided by the avg # of emps Why Measure: Better understand cultural impact on staff retention Next Improvement Step: TBD

How Are We Doing?

Aug2015-Jul2016 12 Month Goal	Aug2015-Jul2016 12 Month Avg		Jul2016 Goal	Jul2016 Actual	
TBD	9.05%	⬇	TBD	9.05%	⬆
Turnover Rate	Turnover Rate		Turnover Rate	Turnover Rate	

Turnover Rate Excluding Temporary and Seasonal



Aug2015-Jul2016 Pareto Analysis

