

Lost Time Injury Rate (cases with days away from work) Public Works & Assets



KPI Owner: Chris Scamahorne

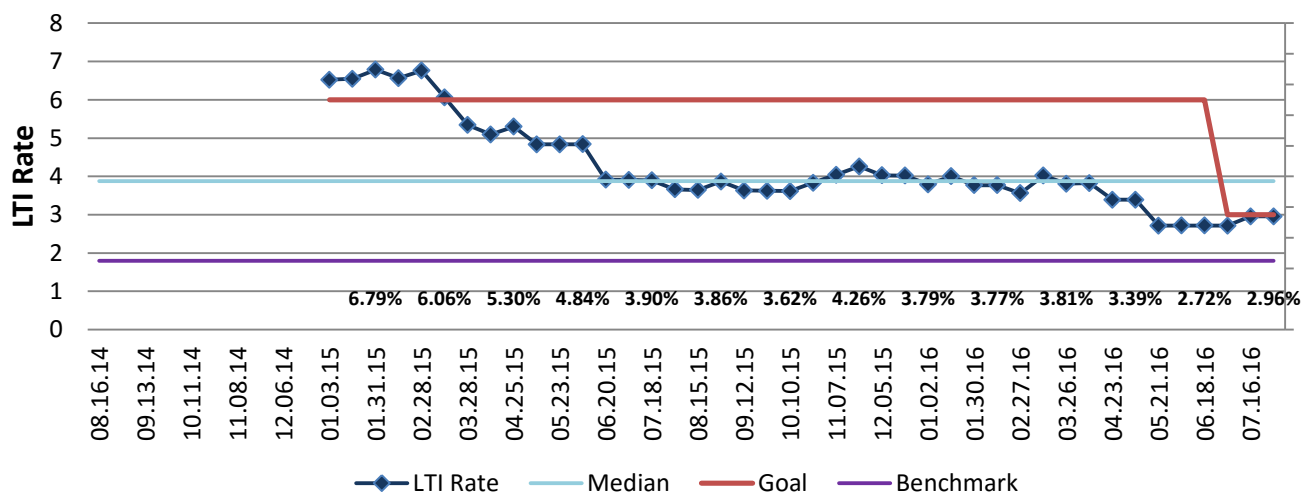
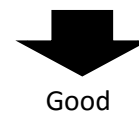
Process: Safety

Baseline, Goal, & Benchmark	Source Summary	Continuous Improvement Summary
Baseline: LTI rate of 7 in calendar year 2013 Goal: Reduce the LTI rate from 7% in 2013 to 3% by the end of 2016. Benchmark: 1.8% all local gov Nov2013	Data Source: OSHA Logs & Payable Time Goal Source: Scope Summary Benchmark Source: Bureau Labor Statistics	Plan-Do-Check-Act Step 6: Validate that solutions work Measurement Method: In a 12 month period, # of OSHA recordables with lost work days times 200,000 divided by the total # of hours worked Why Measure: minimize number & severity of workplace injuries/illness Next Improvement Step: Set a more ambitious goal or target.

How Are We Doing?

08.17.14-07.30.16 Rolling 52wk Avg Goal	08.17.14-07.30.16 Rolling 52wk Avg		08.02.15-07.30.16 Goal	08.02.15-07.30.16 Actual	
5.65	3.56	⬇️	3.00	2.96	⬇️
LTI Rate	LTI Rate		LTI Rate	LTI Rate	

Lost Time Injury Rate (cases with days away from work)



08.02.15-07.30.16 Pareto Analysis

