

Lost Time Injury Rate (cases with days away from work) Emergency Medical Services



KPI Owner: Jordan Mudd

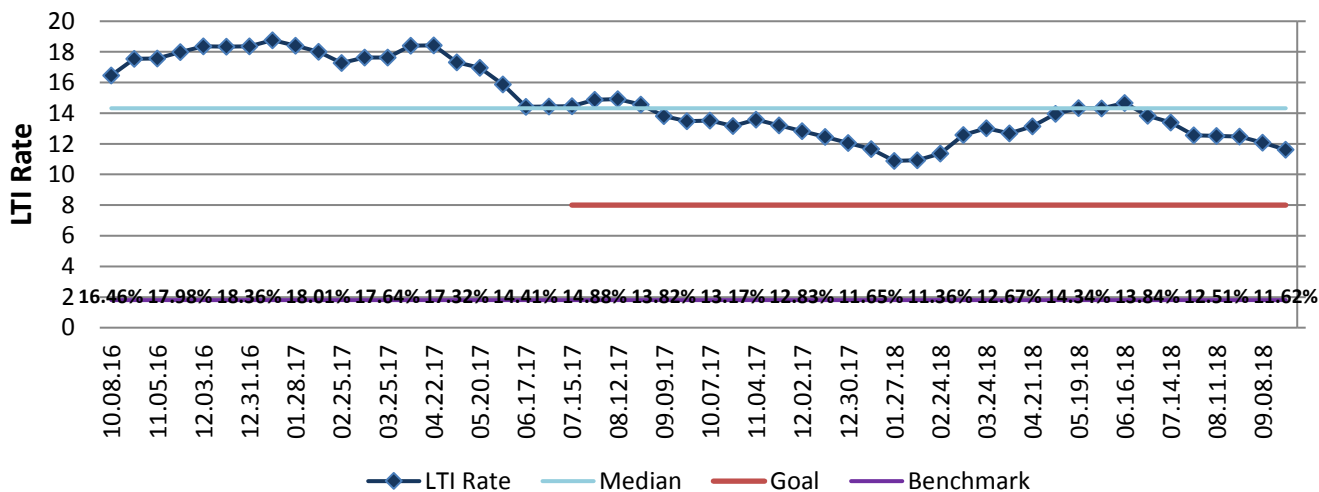
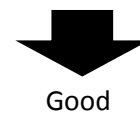
Process: Employee Safety

Baseline, Goal, & Benchmark	Source Summary	Continuous Improvement Summary
Baseline: FY18 - 13.24% Goal: Reduce lost time injury rate to 8% in FY19. Benchmark: 1.8% all local gov Nov2013	Data Source: OSHA Logs & Payable Time Goal Source: Scope Summary Benchmark Source: Bureau Labor Statistics	Plan-Do-Check-Act Step 8: Monitor and diagnose Measurement Method: In a 12 month period, # of OSHA recordables with lost work days times 200,000 divided by the total # of hours worked Why Measure: minimize number & severity of workplace injuries/illness Next Improvement Step: Continue modernization of lifting equipment. Review vehicle accident data to determine improvement areas.

How Are We Doing?

10.09.16-09.22.18 Rolling 52wk Avg Goal	10.09.16-09.22.18 Rolling 52wk Avg		09.24.17-09.22.18 Goal	09.24.17-09.22.18 Actual	
8.00	12.80	🚦	8.00	11.62	🚦
LTI Rate	LTI Rate		LTI Rate	LTI Rate	

Lost Time Injury Rate (cases with days away from work)



10.1.17 - 9.22.18 Pareto Analysis

