

Hours Lost Due to Work Related Injury/Illness Emergency Medical Services



KPI Owner: Jordan Mudd

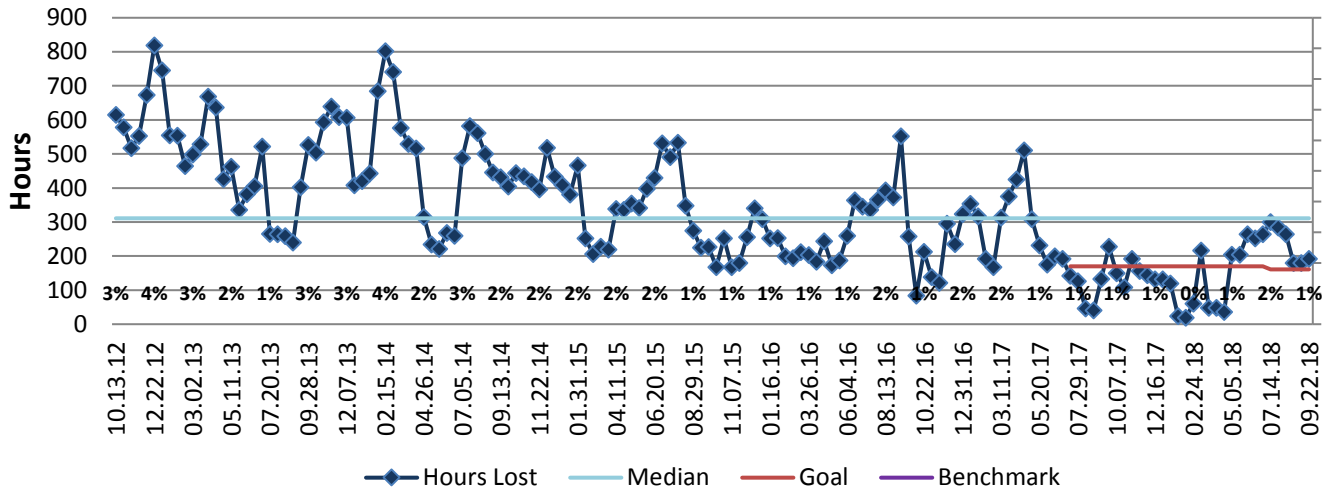
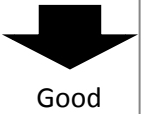
Process: Employee Safety

Baseline, Goal, & Benchmark	Source Summary	Continuous Improvement Summary
Baseline: FY18 - 134 biweekly average hours Goal: Reduce hours lost by 5% (161 hours per pay period) compared to FY18 biweekly average. Benchmark: TBD	Data Source: Payable Time PeopleSoft Goal Source: Scope Summary Benchmark Source: TBD	Plan-Do-Check-Act Step 8: Monitor and diagnose Measurement Method: The total number of hours per month employees were absent due to a work place injury or an illness contracted at work, rate calculated by dividing by total standard hours Why Measure: Minimize number & severity of workplace injuries/illness Next Improvement Step: Continue modernization of lifting equipment. Review vehicle accident data to determine improvement areas.

How Are We Doing?

09.24.17-09.22.18 12 Month Goal	09.24.17-09.22.18 12 Month Actual		09.09.18-09.22.18 Goal	09.09.18-09.22.18 Actual	
4,366	4,173		161	192	
Hours	Hours		Hours	Hours	

Hours Lost Due to Work Related Injury/Illness



Hours Off Truck Due to Work-Related Injury

