

911 Call Answer Time Not w/in 20 Seconds Emergency Services



KPI Owner: Angela Downes

Process: 911 Communications

Baseline, Goal, & Benchmark	Source Summary	Continuous Improvement Summary
Baseline: Sept '15 - 3% calls not within 20 sec Goal: <5% of calls not answered outside of target time of 20 seconds Benchmark: 95% of 911 calls answered in 20 sec	Data Source: Cassidian Goal Source: Dept Management Team Benchmark Source: NENA	Plan-Do-Check-Act Step 8: Monitor and diagnose Measurement Method: The percentage of 911 calls that were not answered by a 911 call taker within 20 seconds Why Measure: Help enable quickest possible response to emergency calls Next Improvement Step: Continue to monitor and diagnose. ASAP to PSAP solution. Public education. Training academy and remedial training.

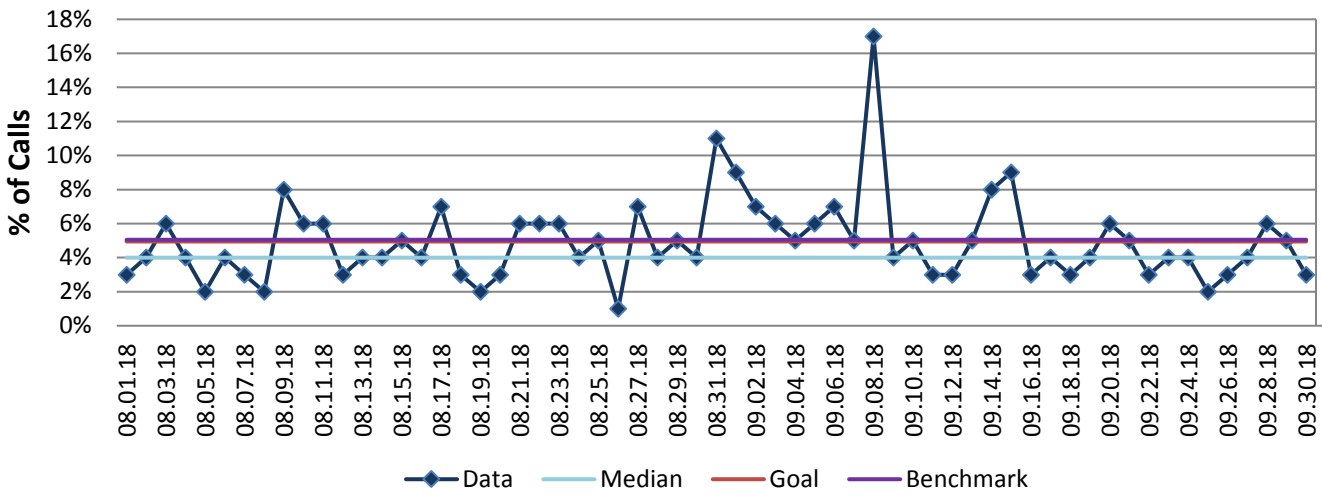
How Are We Doing?

08.31.18-09.30.18 1 Month Goal	08.31.18-09.30.18 1 Month Total		09.30.18 Goal	09.30.18 Actual	
5%	5%		5%	3%	
% of Calls	% of Calls		% of Calls	% of Calls	

911 Call Answer Time Not w/in 20 Seconds



Good



Root cause analysis is not necessary because there is no gap between the goal and current performance.