

# Metro Demolitions Develop Louisville



KPI Owner: Sally Jessel and Carrie Fry

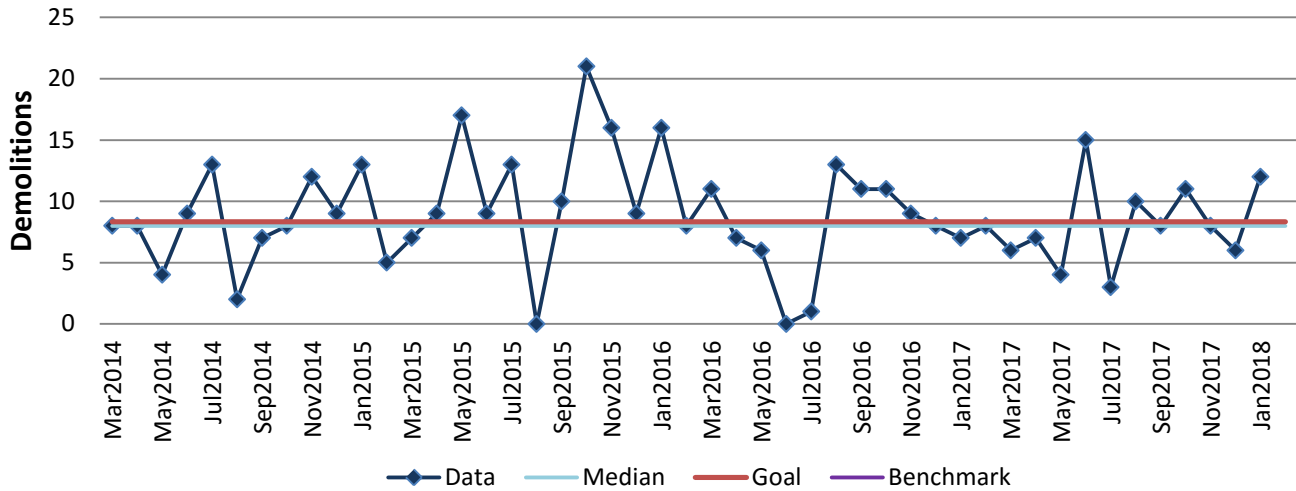
Process: Demolition

Baseline, Goal, & Benchmark	Source Summary	Continuous Improvement Summary
Baseline: FY16, 107 structures demolished Goal: Demolish 100 structures in FY17; this relates to Mayor's Goal 16: Resolve Abandoned Properties; it is an initiative to demolish blighted properties Benchmark: TBD	Data Source: Hansen Goal Source: IDT and Department Team Goal Benchmark Source: TBD	Plan-Do-Check-Act Step 4: Generate and prioritize potential solutions Measurement Method: Count of vacant/abandoned structures demolished monthly by Louisville Metro Why Measure: Demo candidate properties pose a health and safety concern to citizens and depress property values and community vitality Next Improvement Step: Implementation of a property severity ranking to prioritize demolition cases

## How Are We Doing?

Feb2017-Jan2018 12 Month Goal	Feb2017-Jan2018 12 Month Actual		Jan2018 Goal	Jan2018 Actual	
<b>100</b>	<b>98</b>		<b>8</b>	<b>12</b>	
Demolitions	Demolitions		Demolitions	Demolitions	

## Metro Demolitions



**Root cause analysis is not necessary because there is no gap between the goal and current performance.**