

Hours Not Worked Develop Louisville



KPI Owner: David Marchal

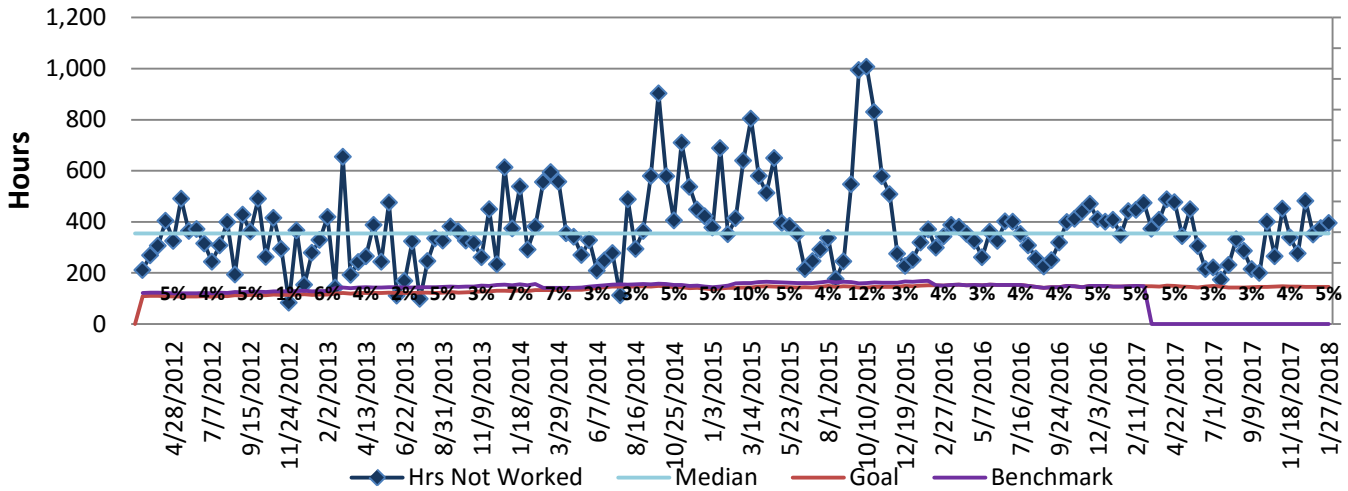
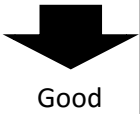
Process: Time and Attendance

Baseline, Goal, & Benchmark	Source Summary	Continuous Improvement Summary
Baseline: TBD due to reorg of Const. Review Goal: 1.7% Benchmark: Local Government Rate of 1.7%	Data Source: Payable Time PeopleSoft Goal Source: Scope Summary Benchmark Source: Bureau Labor Statistics	Plan-Do-Check-Act Step 2: Validate problem: baseline, benchmark, & goal Measurement Method: Total # of hrs per month employees were not at work performing normal job functions (excludes vacations & holidays), rate calculated by dividing by total standard hours Why Measure: Better understand culture impact on employee attendance Next Improvement Step: Determine a baseline and goal for this measurement.

How Are We Doing?

01.29.17-01.27.18 12 Month Goal	01.29.17-01.27.18 12 Month Actual		01.14.18-01.27.18 Goal	01.14.18-01.27.18 Actual	
3,949	9,417		145	396	
Hours	Hours		Hours	Hours	

Hours Not Worked



01.29.17-01.27.18 Pareto Analysis

