

Metrowide OSHA Count of Reported LTI Human Resources



KPI Owner: Amy Miller/JP Hamm

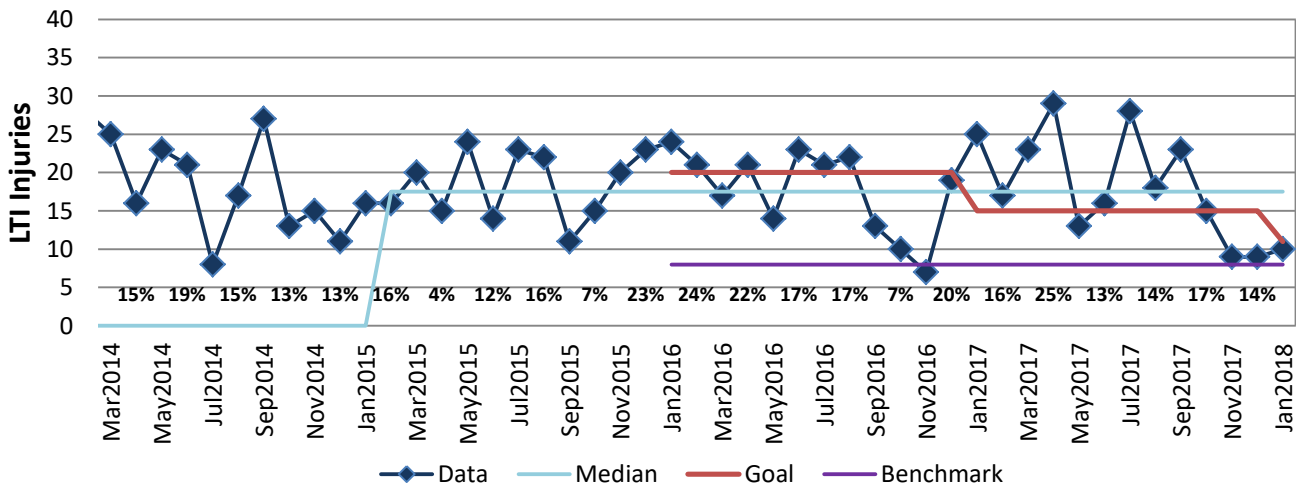
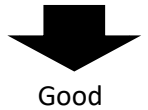
Process: Safety Management

Baseline, Goal, & Benchmark	Source Summary	Continuous Improvement Summary
<p>Baseline: Average CY15 1.4 reported</p> <p>Goal: Compared to CY15, reduce the total number of LTIs on average per month to <=11 reported occurrences. The reduction would equate to a 7% reduction of the frequency.</p> <p>Benchmark: Benchmark goal is a frequency of 1.6 for Local Government this equals a count ≈8 LTIs per month</p>	<p>Data Source: OSHA Log</p> <p>Goal Source: Metro OSHA 5 Yr Plan</p> <p>Benchmark Source: National BLS - Bureau Labor Statistics</p>	<p>Plan-Do-Check-Act Step 5: Pilot short term and/or long term solutions</p> <p>Measurement Method: Monthly sum of the count of LTIs</p> <p>Why Measure: To reduce the most significant injuries that are both high dollar and produce the most permanent employee impairment</p> <p>Next Improvement Step: Focus on high LTI frequency departments and/or no departments with no reduction; work toward regulatory training through training matrix</p>

How Are We Doing?

Feb2017-Jan2018 12 Month Goal	Feb2017-Jan2018 12 Month Actual		Jan2018 Goal	Jan2018 Actual	
176	210		11	10	
LTI Injuries	LTI Injuries		LTI Injuries	LTI Injuries	

Metrowide OSHA Count of Reported LTI



Feb2017-Jan2018 Pareto Analysis

