

# Metrowide OSHA Count of Reported LTI Human Resources



KPI Owner: Amy Miller/JP Hamm

Process: Safety Management

Baseline, Goal, & Benchmark	Source Summary	Continuous Improvement Summary
<p><b>Baseline:</b> Average CY15 1.4 reported</p> <p><b>Goal:</b> Compared to CY17, reduce the total number of LTIs on average per month to &lt;=17 reported occurrences. The reduction would equate to a 5% reduction of the frequency.</p> <p><b>Benchmark:</b> Benchmark goal is a frequency of 1.6 for Local Government this equals a count of</p>	<p><b>Data Source:</b> OSHA Log</p> <p><b>Goal Source:</b> Metro OSHA 5 Yr Plan</p> <p><b>Benchmark Source:</b> National BLS - Bureau Labor Statistics</p>	<p><b>Plan-Do-Check-Act Step 5:</b> Pilot short term and/or long term solutions</p> <p><b>Measurement Method:</b> Monthly cum of the count LTIs</p> <p><b>Why Measure:</b> To reduce the most significant injuries that are both high dollar and produce the most permanent employee impairment</p> <p><b>Next Improvement Step:</b> Focus on high LTI frequency departments and/or departments with no reduction; work toward regulatory training through training matrix. Monthly injury review meetings.</p>

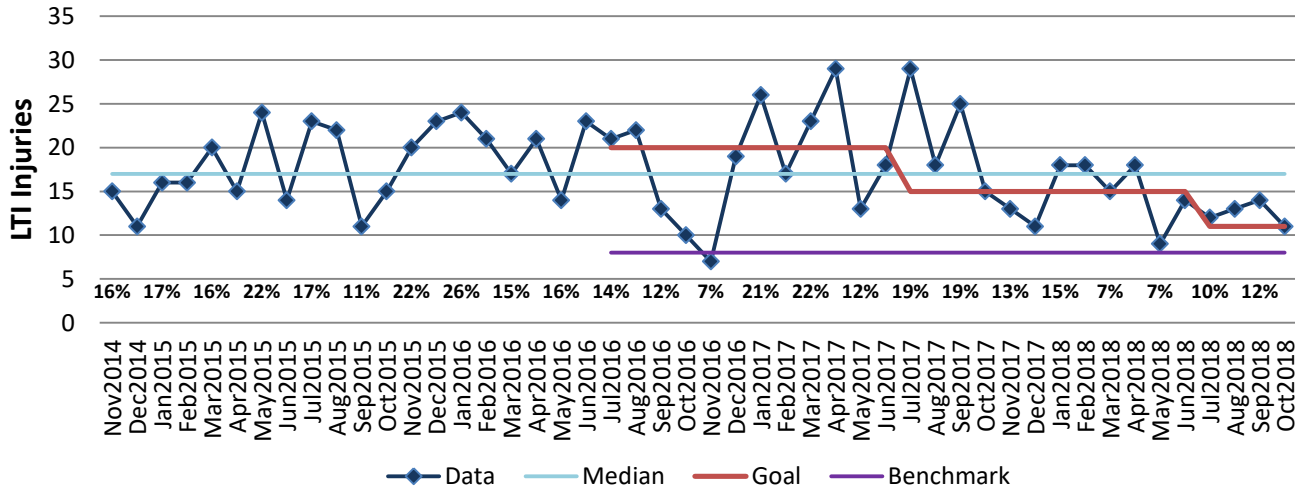
### How Are We Doing?

Nov2017-Oct2018 12 Month Goal	Nov2017-Oct2018 12 Month Actual		Oct2018 Goal	Oct2018 Actual	
<b>164</b>	<b>166</b>	⬇	<b>11</b>	<b>11</b>	⬆
LTI Injuries	LTI Injuries		LTI Injuries	LTI Injuries	

## Metrowide OSHA Count of Reported LTI



Good



## Nov2017-Oct2018 Pareto Analysis

