

Metrowide OSHA (LTI) Yearly Frequency Human Resources



KPI Owner: Amy Miller/JP Hamm

Process: Safety

Baseline, Goal, & Benchmark	Source Summary	Continuous Improvement Summary
Baseline: Average Frequency CY03-CY13 7.72 Goal: The CY17 is a 3.78 which is a 5% reduction of CY16. Benchmark: 1.6 all local gov Dec 2016	Data Source: OSHA Log Goal Source: Metro OSHA 5 Yr Plan Benchmark Source: National BLS - Bureau Labor Statistics	Plan-Do-Check-Act Step 5: Pilot short term and/or long term solutions Measurement Method: $LTI = (Metrowide\ LTI * 200000 / Total\ Metrowide\ Hours\ Worked)$ Why Measure: To reduce the most significant injuries that are both high dollar and produce the most permanent employee impairment Next Improvement Step: Currently meeting monthly with agencies to review injuries to look at injuries in a more frequent review. Working with agencies on reviewing of incidents.

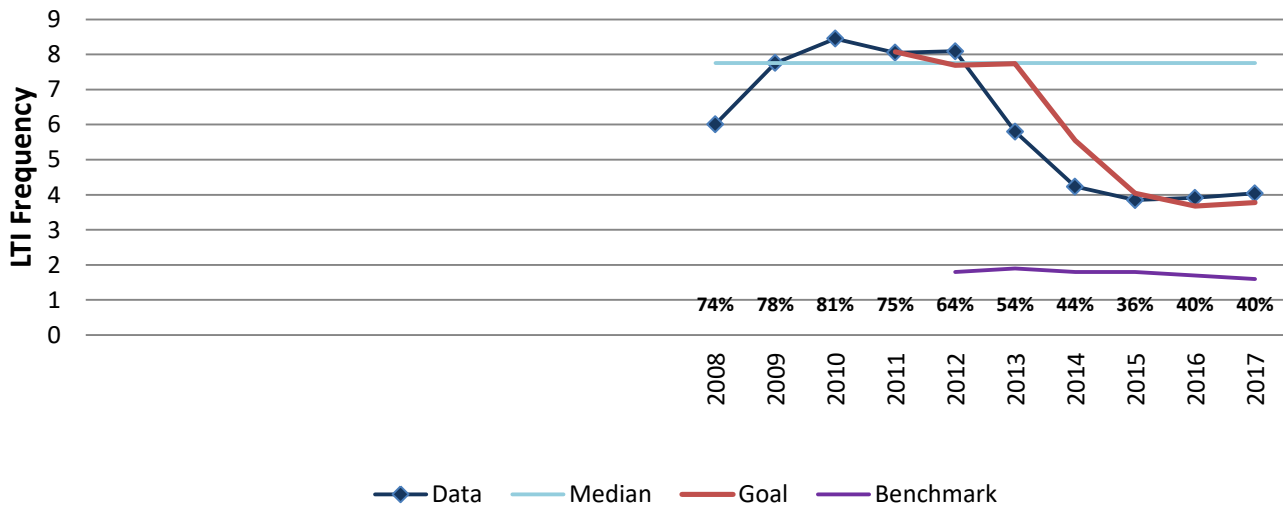
How Are We Doing?

2013-2017 5 Year Goal	2013-2017 5 Year Actual		2017 Goal	2017 Actual	
25	22		4	4	
LTI Frequency	LTI Frequency		LTI Frequency	LTI Frequency	

Metrowide OSHA (LTI) Yearly Frequency



Good



Pareto Data Not Available at this time.