

# Hours Lost Due to Work Related Injury/Illness Develop Louisville



KPI Owner: David Marchal

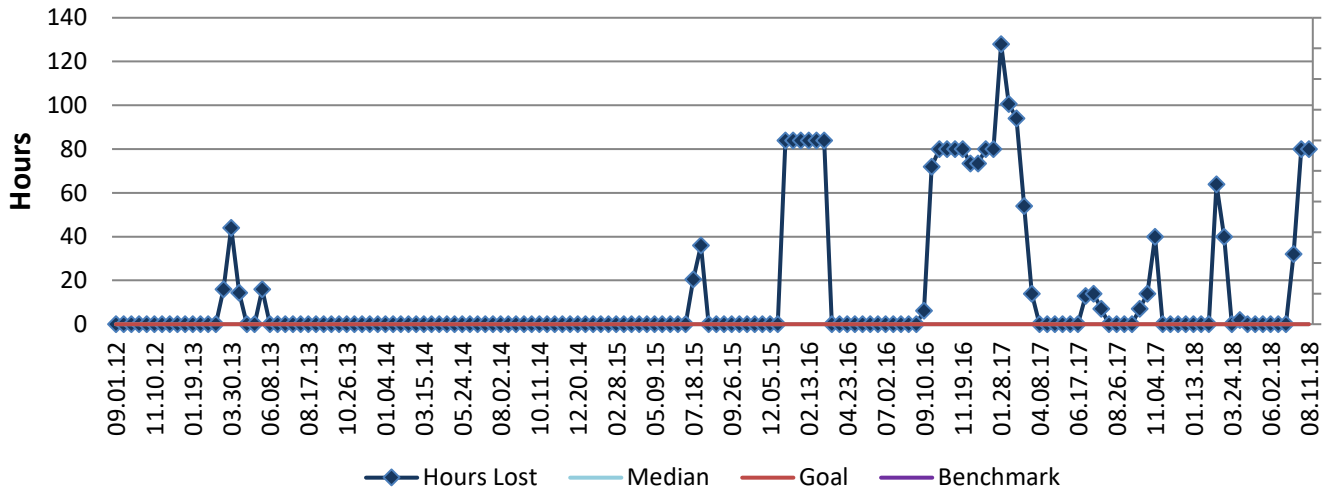
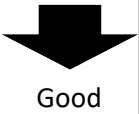
Process: Safety Management

10/12/2018	Source Summary	Continuous Improvement Summary
Baseline: TBD due to reorg of Const. Review Goal: Zero hours per pay period  Benchmark: TBD	Data Source: Payable Time PeopleSoft  Goal Source: Scope Summary  Benchmark Source: TBD	Plan-Do-Check-Act Step 2: Validate problem: baseline, benchmark, & goal Measurement Method: The total number of hours per month employees were absent due to a work place injury or an illness contracted at work, rate calculated by dividing by total standard hours Why Measure: Minimize number & severity of workplace injuries/illness Next Improvement Step: Continue current operations

### How Are We Doing?

08.13.17-08.11.18 12 Month Goal	08.13.17-08.11.18 12 Month Actual		07.29.18-08.11.18 Goal	07.29.18-08.11.18 Actual	
<b>0</b>	<b>359</b>		<b>0</b>	<b>80</b>	
<b>Hours</b>	<b>Hours</b>		<b>Hours</b>	<b>Hours</b>	

## Hours Lost Due to Work Related Injury/Illness



**Root cause analysis determined recent hours lost were attributed to one employee who has since returned to work.**