

# Hours Not Worked Develop Louisville



KPI Owner: David Marchal

Process: Time and Attendance

10/12/2018	Source Summary	Continuous Improvement Summary
Baseline: TBD due to reorg of Const. Review Goal: 1.7%	Data Source: Payable Time PeopleSoft  Goal Source: Scope Summary  Benchmark Source: Bureau Labor Statistics	Plan-Do-Check-Act Step 2: Validate problem: baseline, benchmark, & goal Measurement Method: Total # of hrs per month employees were not at work performing normal job functions (excludes vacations & holidays), rate calculated by dividing by total standard hours Why Measure: Better understand culture impact on employee attendance Next Improvement Step: Determine a baseline and goal for this measurement.
Benchmark: Local Government Rate of 1.7%		

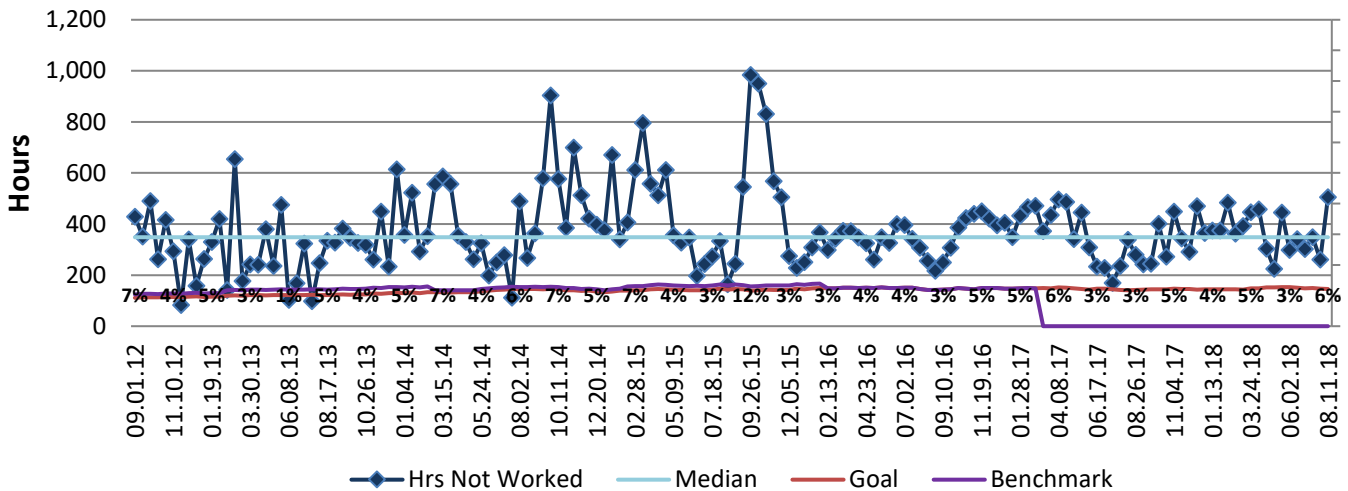
## How Are We Doing?

08.13.17-08.11.18 12 Month Goal	08.13.17-08.11.18 12 Month Actual		07.29.18-08.11.18 Goal	07.29.18-08.11.18 Actual	
<b>3,810</b>	<b>9,283</b>		<b>146</b>	<b>505</b>	
Hours	Hours		Hours	Hours	

## Hours Not Worked



Good



## 08.13.17-08.11.18 Pareto Analysis

