

Comp Time Human Resources



KPI Owner: JP Hamm

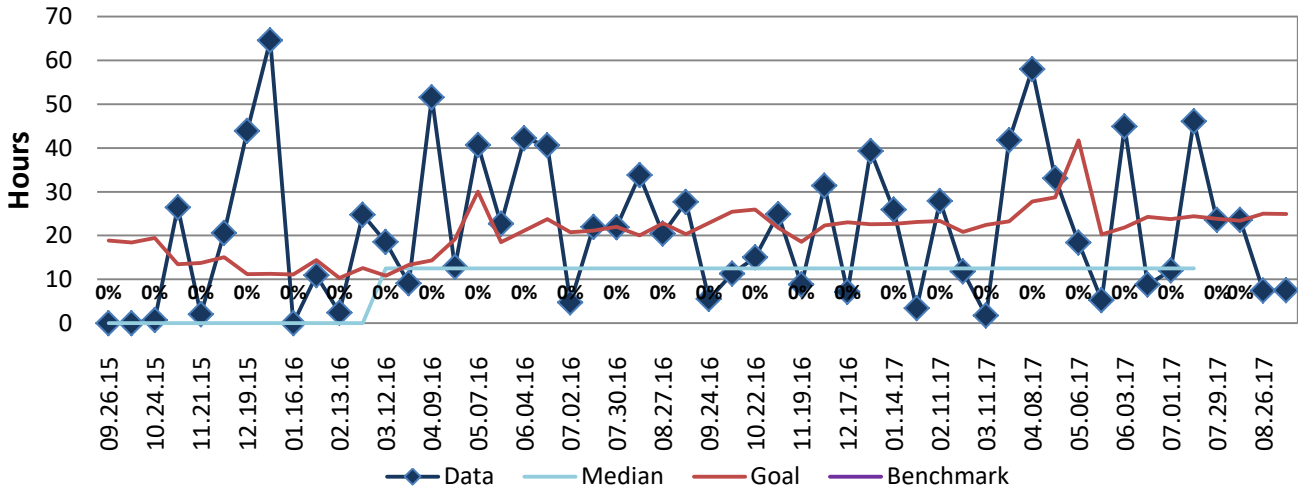
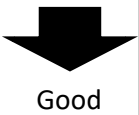
Process: Time and Attendance

Baseline, Goal, & Benchmark	Source Summary	Continuous Improvement Summary
Baseline: FY13 average rate 0.62% Goal: Compared to FY14, maintain <=1% of compensatory time used. Benchmark: None	Data Source: PeopleSoft Goal Source: FY13 average Benchmark Source: N/A	Plan-Do-Check-Act Step 3: Determine and quantify root causes Measurement Method: Sum of comp time hours Why Measure: To better understand culture impact on employee usage of compensatory time for future comparison with overtime data Next Improvement Step: Comparison of OT v Comp time to gain a knowledge of departmental usage and tracking

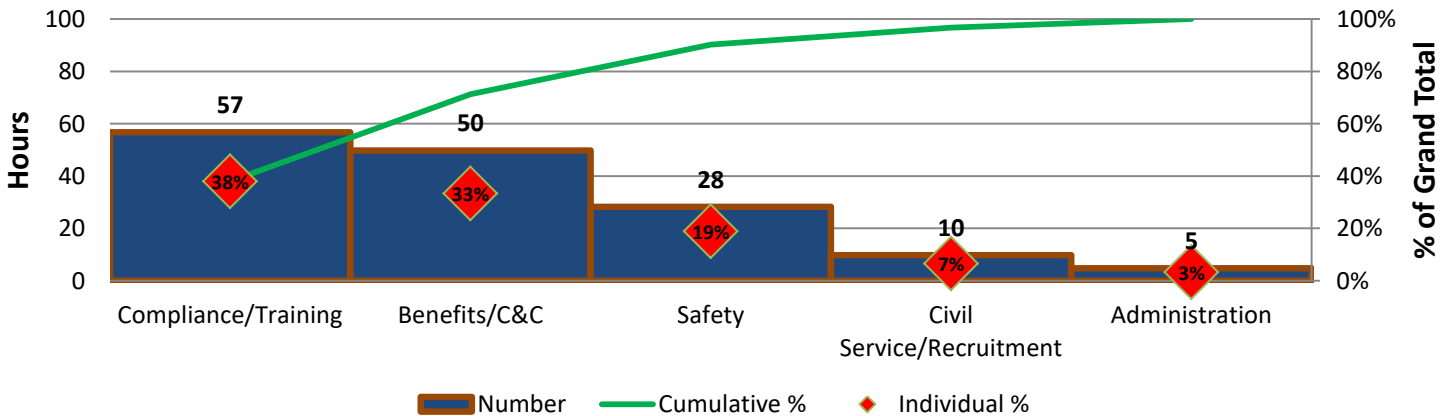
How Are We Doing?

08.28.16-08.26.17 12 Month Goal	09.11.16-08.26.17 12 Month Actual		08.27.17-08.26.17 Goal	08.27.17-08.26.17 Actual	
603	537		25	7	
Hours	Hours		Hours	Hours	

Comp Time



03/25/17 - 09.09.17 Pareto Analysis



Report Generated: 10/13/2017

Data Expires: 10/17/2017