

# Comp Time Human Resources



KPI Owner: JP Hamm

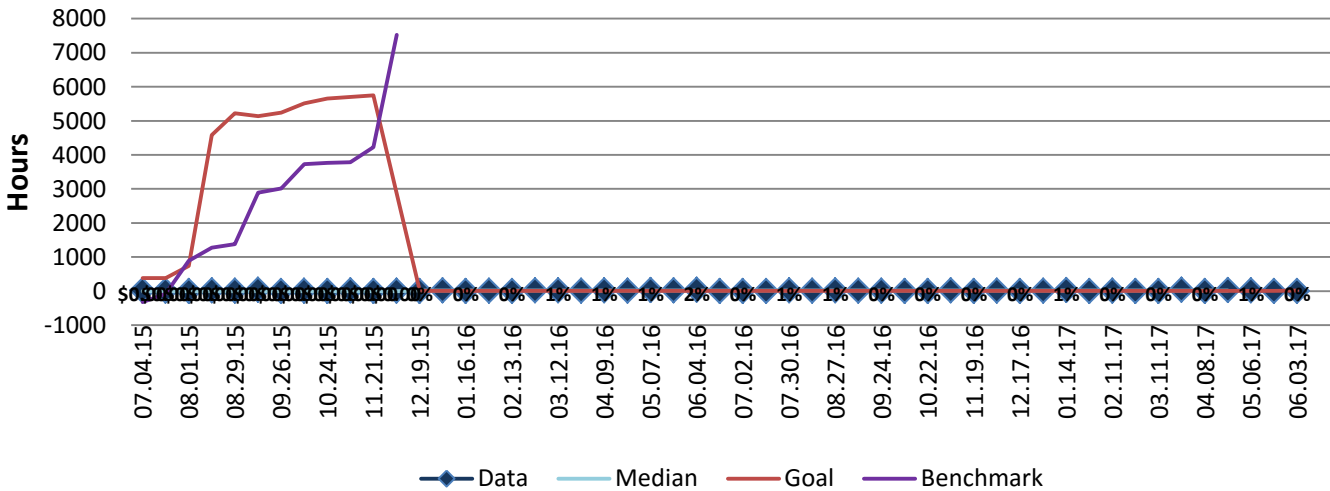
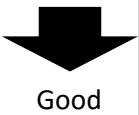
Process: Time and Attendance

Baseline, Goal, & Benchmark	Source Summary	Continuous Improvement Summary
Baseline: FY13 average rate 0.62% Goal: Compared to FY14, maintain <=1% of compensatory time used.  Benchmark: None	Data Source: PeopleSoft  Goal Source: FY13 average  Benchmark Source: N/A	Plan-Do-Check-Act Step 3: Determine and quantify root causes Measurement Method: Sum of comp time hours  Why Measure: To better understand culture impact on employee usage of compensatory time for future comparison with overtime data Next Improvement Step: Comparison of OT v Comp time to gain a knowledge of departmental usage and tracking

### How Are We Doing?

06.05.16-06.03.17 12 Month Goal	06.19.16-06.03.17 12 Month Actual		06.04.17-06.03.17 Goal	06.04.17-06.03.17 Actual	
<b>249</b>	<b>276</b>		<b>11</b>	<b>6</b>	
Hours	Hours		Hours	Hours	

## Comp Time



### 12/17/16 - 06/03/17 Pareto Analysis

