

Metrowide OSHA (LTI) Yearly Frequency Human Resources



KPI Owner: Amy Miller/JP Hamm

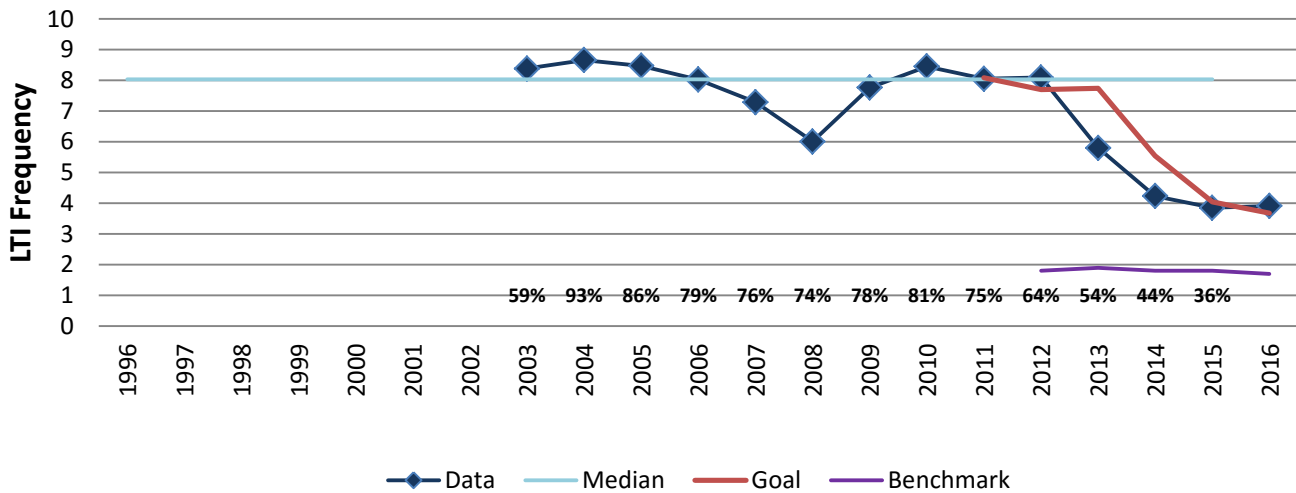
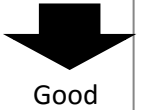
Process: Safety

Baseline, Goal, & Benchmark	Source Summary	Continuous Improvement Summary
Baseline: Average Frequency CY03-CY13 7.72 Goal: Compared to CY15, reduce lost time due to work related injury frequency by 5%. CY16 goal achieve 3.68 frequency Benchmark: 1.8 all local gov Dec 2013	Data Source: OSHA Log Goal Source: Metro OSHA 5 Yr Plan Benchmark Source: National BLS - Bureau Labor Statistics	Plan-Do-Check-Act Step 5: Pilot short term and/or long term solutions Measurement Method: $LTI = (Metrowide\ LTI * 200000) / Total\ Metrowide\ Hours\ Worked$ Why Measure: To reduce the most significant injuries that are both high dollar and produce the most permanent employee impairment Next Improvement Step: Finish JHA, complete implementation of 1st Report of Injury, and focus on high LTI frequency departments

How Are We Doing?

2012-2016 (5 Year) Goal	2012-2016 (5 Year) Actual		2016 Goal	2016 Actual	
5.55	4.23		3.68	3.91	
LTI Frequency	LTI Frequency		LTI Frequency	LTI Frequency	

Metrowide OSHA (LTI) Yearly Frequency



Pareto Data Not Available at this time.